



powderlife

NISEKO ニセコ

Issue 39 // February 11 to 24 // 2012

WINTER SPORTS * ENTERTAINMENT * REAL ESTATE

www.powderlife.com



VALENTINE'S DAY

Celebrate the Japanese way

NIKKA WHISKY

Hokkaido's award winning whisky distillery

RESORT GUIDE

Your guide to Niseko – page 27

FREE
NISEKO'S POWDER
LIFESTYLE MAGAZINE
FRESH EVERY
2 WEEKS



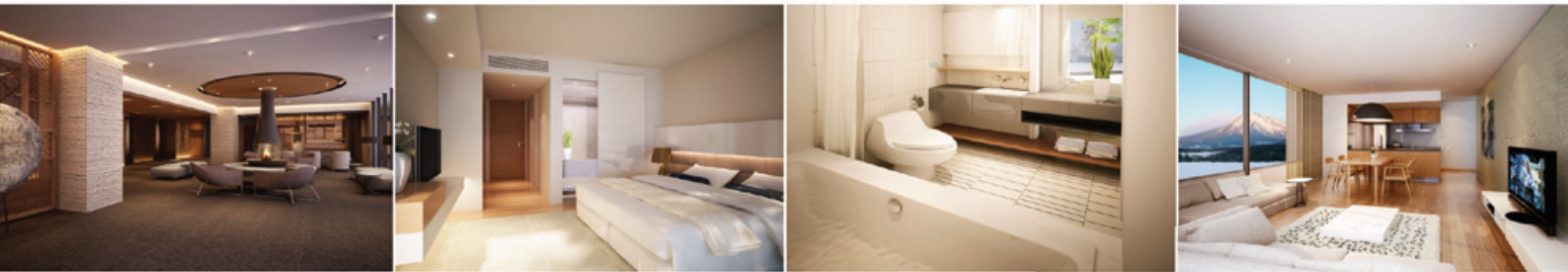
SHIKI
NISEKO

SHIKI Showroom, Now Open

Visit our new showroom, indulge in specially brewed coffee and learn more about SHIKI Niseko



Enjoy four seasons of luxury at the Aspen of Asia



THE DEVELOPMENT

SHIKI Niseko, 68 beautifully crafted 1, 2 & 3 bedroom apartments incorporating contemporary Japanese aesthetics, premium furnishings and fittings, state of the art amenities and framing breathtaking views of Mount Youtei, the Hirafu ski area and the surrounding national park.

Ideally located amidst Hirafu's renowned restaurants & bars, including a relaxation spa & gymnasium, ground floor retail outlets and excellent access to the ski area, SHIKI Niseko offers a sensational investment for one of the world's fastest growing international ski resorts.

KEY FEATURES

- ✘ Attractive Payment Scheme*
- ✘ 4% Guaranteed Returns*
- ✘ Managed by 5 Star Hospitality Services & Features
- ✘ Freehold Status Ownership
- ✘ Fully Furnished Luxury Apartments
- ✘ Protected Panoramic Views

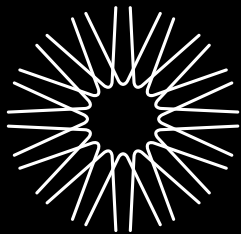
sales enquiries:
Jones Lang LaSalle
+65 9817 4537

developer:
APL Niseko Property TMK
+6012 6988 606 • 090 2057 7196



WWW.SHIKINISEKO.COM

Whilst every reasonable care has been taken in providing the information contained herein, the developer does not make any representation or warranty thereof and cannot be held responsible for any inaccuracies howsoever arising. All pictures and illustrations are artist's impression only. Developer: APL Niseko Property TMK (0124 05 002199) - Member of Low Yat Group. [*terms & conditions apply]



LOFT
NISEKO

WWW.LOFT-NISEKO.COM



NOW SELLING

THE LOFT NISEKO CONSISTS OF **SIX** AMAZING **LUXURY CHIC** LOFT STYLE SPLIT LEVEL APARTMENTS OF 1.5 TO 3 BEDROOMS.

Conveniently situated in the heart of Hirafu Village a moments stroll to the ski lifts and the village buzz. LOFT is along one the best streets of the village known as the "middle bluff" where all apartments have breathtaking panoramic protected views of Mount Yotei. Fully fitted with european designer furniture, Miele & Gaggenau kitchen appliances, coupled with on-site concierge service and personal transportation service ensures all owners a true luxury experience.

VISIT THE SALES OFFICES
AT THE GROUND FLOOR OF THE VALE
AND THE NISEKO REAL ESTATE OFFICE

SALES ENQUIRIES CONTACT CO-AGENTS:



TEL: +81 [0] 136 21 7722
E-MAIL: INFO@NISEKOREALESTATE.COM
URL: WWW.NISEKOREALESTATE.COM



TEL: +81 [0] 136 23 1724
E-MAIL: CRAIG@NISADE.COM
URL: WWW.NISADE.COM

DEVELOPER:



APEX
PROPERTY

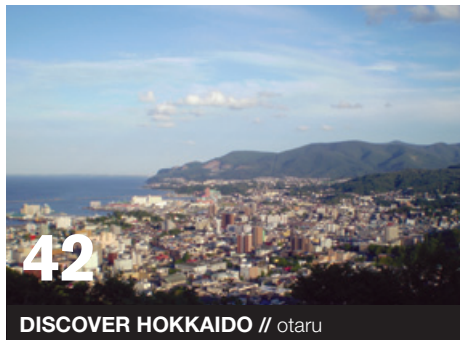
* CONTENTS // issue 39



EAT & DRINK // niseko street food



TRAVEL FEATURE // canyoning nishizawa gorge



DISCOVER HOKKAIDO // otaru

6 Editor's Note

9 Fluff

Light news & information:
Powder snobbery
Valentine's Day
Randy's ruler pants

10 Niseko News

Your guide to Yukitopia
Tohoku support raffle
Snow cavern open in Niseko Village

12 In The Loop

What's on around town

14 Social

Snap and Flash
Setsudo – opening ceremony
Australian Chamber Orchestra

16 Eat & Drink

Niseko street food

18 Irasshaimase

Sushi Riders - sushi delivery
Saika - yakitori

20 Real Estate News

HTD offering fractional ownership
Swiss chalet chic comes to Niseko

22 Powder Poster

24 1000 Words

26 Backcountry

Stay safe on the mountain

28 Resort Guide

Food, restaurants and bars
Tours and activities
Shopping and retail
Rental and services
Resort maps

40 TRAVEL FEATURE

Canyoning the Nishizawa gorge

42 Discover Hokkaido

Nikka Whisky
Otaru

powderlife
NISEKO ニセコ

winter print run 35,000 **estimated readership** 100,000+
編集長 managing editor Kerstin Winter カーストン・ウインター
出版者 publisher Kristian Lund クリス・ランド,
Bevan Colless ベバン・コレス
副編集長 associate editor Kanami Anderson 加奈美・アンダーソン
デザイナー designer Paul Malandain ポール・マランデン,
投稿者 contributors Chris Chan
写真撮影 photography Niseko Photography, Glen Claydon Photography
翻訳者 translation Michiko Prior ブライアー・典子,
Saoko Wakasugi 若杉・さおか
広告掲載に関するお問い合わせ advertising inquiries
ads@powderlife.com
予約購読/既刊 subscriptions / past issues
info@powderlife.com

Powderlife Niseko Magazine is a Niseko Media Publication

パウダーライフマガジンはニセコメディアが出版しています

170-5 Aza Yamada Kutchan-cho
Abuta-gun, Hokkaido 044-0081
tel 0136 22 2000 fax 0136 22 2011

www.powderlife.com

©2011-12 Niseko Media KK

Contents of *Powderlife* are subject to copyright. Reproduction in whole or in part without written permission of the publisher is prohibited. The publication of editorial does not necessarily constitute an endorsement of views or opinions expressed. The publisher does not accept responsibility for statements made by advertisers.

Niseko's first English language periodical magazine – published every two weeks in Niseko between December and March, once a year as a globally distributed Niseko promotional issue (*Powderlife* Global Edition).

ニセコ初の定期刊行雑誌。冬季期間(12月~3月)は2週間に1回発行。冬季期間外はグローバルエディションとして一回発行。

Past issues available at the *Powderlife* office, Lower Ground Floor Australia House (opposite Seicomart).



cover // andy meadows photo // glen claydon

NISEKO

real estate

Niseko's leading real estate agency

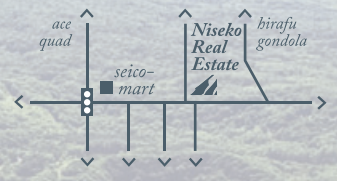
Featured Properties



KIZUNA



LOFT



* EDITOR'S NOTE



photo // kanami anderson

WITH metres of snow piled up and heavy snowfall forecast to continue, what better backdrop could there be for Kutchan's upcoming winter festival Yukitopia?

Yukitopia's events draw big crowds every year – from skiing across icy water to hot pot cooking competitions, it's all open for participation and listed on our in the loop page as well as on Powderlife.com.

Also in this issue, read about the importance of chocolate on Valentine's Day in Japan and why men don't really have to do anything on that day.

If you're not celebrating Valentine's on Niseko's slopes, you could go on a day trip to the Nikka Whisky distillery in nearby Yoichi and taste their world-renowned single malts. The flavours have mouth-watering descriptions such as "ripe berries, dark chocolate and polished oak with a peppery aroma on the finish". Only a few train stops from there is Otaru, which makes for a perfect Valentine's trip with its romantic canal and historic architecture. You'll find more on both destinations on our Discover Hokkaido page.

If you're staying in Niseko and looking for a quick bite between runs, visit the men who are braving the cold in their vans all day long. They serve you fresh food from Indian curries to kebabs, all listed in our Eat & Drink section.

While you're here you can also show support to the people of Miyagi Prefecture, who were among the worst affected by last year's tsunami. The Niseko community has organised a raffle fundraiser and the money will go entirely to the rebuilding and assistance work in Miyagi. On our news page you'll find more information on how to enter the raffle and the prizes you could win. Good luck!

Kerstin Winter, Powderlife Managing Editor, kerstin@powderlife.com

積雪量は何メートルと予測される日が続くニセコ。そんな中倶知安では雪トピア祭りが開催されます。これは毎年行われるお祭りで各地から人が集まり賑わいます。水面滑走トライアルや、鍋料理大会など、いろいろなイベント揃い。インザループや powderlife.com に情報を載せてるのでご覧ください。

また、今号は日本でのバレンタインデーについてを掲載。なぜ日本では男性はバレンタインデーの日に女性に贈り物をしなくても良いのか。ただチョコレートを食べるだけ?などの疑問を特集。

もしもバレンタインデーの日にニセコ以外で何かをしたいなどお考えの方、日帰りで余市の近くにあるニッカウヰスキーの蒸留酒製造所を訪ねてみてはどうですか?ここはいくつもの賞をとっており、世界でも有名なシングルモルトを製造している場所。味は「熟れたベリー」「ダークチョコレート」「上品なオーク」そして「ペッパー」のアロマが効いているとのこと。小樽から数駅はなれたところにあるので、バレンタインデーにはもってこい。運河や歴史的建物がロマンチックに彩ってくれます。どちらの場所もディスカバーホッカイドウのページに掲載しています。

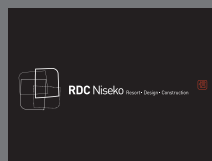
スキーやボード楽しくてやめられない、でも小腹が空いたという方おすすめなのが、バスでインディアンカレーやケバブを販売しているところがあります。これらの情報はすべてEat&Drinkセクションに乗っているので見てくださいね。ニセコに滞在中の方で宮城県をサポートしたいという方、ニセコのコミュニティーがくじ引きを計画したので参加してはどうですか。チケット購入代が宮城県の建築物再生やアシスタントワーク代として送られます。Newsのページにこちらのイベントについて載せているので要チェック。パートのスノーボードが欲しい?それともタイでの宿泊なんてどうですか?当選するといいですね!
カースティン ウィンター パウダーライフマガジン編集者, kerstin@powderlife.com

HIRAFU-ZAKA MAIN STREET MASTER PLAN



NOW UNDER CONSTRUCTION!

CG Image, Final construction may vary slightly



Proudly supported by the Niseko Community!

IMAGINE

After an exciting day on the slopes or in the village, we offer perfect indoor comfort matching the awesome outdoors. IMAGINE coming home to a naturally warm space, after hanging your boots on the warm rack, and your ski parkas on the warm coat hooks designed with the entrance PS radiator. IMAGINE taking a hot shower and drying yourself with a warm, dry towel hanging on the PS radiator warming up the bathroom. IMAGINE sleeping effortlessly in a bedroom warmed up to a perfect sleeping temperature. And finally, IMAGINE all this at such a wonderfully reasonable energy consumption... **PS HEATING.**



PS Company

SINCE 1960 TEL: 011-372-7605 FAX: 011-372-8886 E-mail: psnrs@psk.co.jp

www.ps-group.co.jp

PROSKI

- CONVENIENT LOCATION - PROSKI DEMO CENTRE
- HEATED OVERNIGHT SKI & BOARD STORAGE
- TEST SKIS & BOARDS AVAILABLE FOR HIRE
- GREAT RANGE OF SNOW ACCESSORIES
- BILINGUAL INSTRUCTORS - ENGLISH & JAPANESE
- SPECIALIZED KIDS LESSONS - EARLY DROP-OFF AVAILABLE

NISEKO'S NO1 SKI & SNOWBOARD STORE!

PROSKI is Niseko's premier snowsport store: retail, rental, lessons and tours for all levels, ages and abilities. Let our friendly, qualified staff give you the tools and knowledge to truly experience Niseko...

0136 22 4199
080 3233 3448

RENTAL & RETAIL STORE, TUNING, BOOTFITTING & SO MUCH MORE...



EXPERIENCE NISEKO WITH THE BEST GEAR...

We have the largest selection of snow skis and ski accessories from all the best brands. Ski gear for all snow conditions and equipment to cater for skiers of all skill levels and riding styles!

'DEMO' CENTER

High-performance ski and snowboard rental, featuring the latest skis and snowboards for skiers and riders of all levels and riding styles.

KEEP YOUR EQUIPMENT IN PEAK CONDITION

Our premium **MASTERFIT BOOTFITTING** and **WINTERSTEIGER EQUIPMENT TUNING** services, ensure your equipment operates at maximum performance in Niseko's powder!

On or off piste, powder or park - PROSKI has the equipment and services for you...



YUKIMI - ALL MOUNTAIN MASTER PROGRAM

SNOWSPORTS SCHOOL

Learn the basics, enhance your skills, fine tune your technique and ultimately get the most out of your time on Niseko's sensational snow with PROSKI's qualified instructors. *More info on lessons and rates online!*



4 day powder intro & exploration. Take the guess work out of run selection and terrain safety with our qualified guides

GUIDED MOUNTAIN ORIENTATION

Quickly learn the entire hill alongside one of our instructors, from lift locations and powder stashes to recommended restaurants and après bars

PRIVATE LESSONS

Learn what you want, where you want, when you want; choose the time, techniques and terrain to cover

STANDARD GROUP LESSONS (HOUR / DAY)

Learn with people of similar abilities and explore with the people who know the mountain best. Interaction with new skiers & boarders makes learning even more fun

LOCATION

2 CENTRAL LOCATIONS!

> SKI SCHOOL & DEMO CENTER ACROSS FROM THE 'ACE FAMILY CHAIR'



SNOWSPORTS SCHOOL

0136 22 0234 ☎
090 7512 4524 ☎

Lessons@PROSKI.com ✉

PROSKISNOWSPORTSSCHOOL Ⓞ

VISIT US ONLINE AT
WWW.PROSKI.COM

* FLUFF // light news & information

POWDER SNOBBERY



photo // azza - niseko photography

with the amount of snow we have already had this season, it might be time to learn some avalanche safety skills

ONCE you've visited Niseko a couple of times, you grow pretty blasé about snowfall.

Old hands watch Niseko first-timers thrilled by 10cm of light dry powder snow – knowing that within days the same people will hardly bat an eyelid at 20cm. Niseko turns you into a powder snob, and soon nowhere else compares.

Take January for example, when many amazing days of consistent snowfall delivered more than 6m of powder on top of December's 6.5m+. So even if it stopped snowing now, we'd still be one of the snowiest resorts on the planet. But the snowfall doesn't stop. And many locals say late February and early March offer Niseko's best skiing conditions - lots of fresh snow, better weather, good visibility, and fewer tracks - even enough to satisfy powder snobs.

– by Chris Chan

VALENTINE'S DAY AND WHITE DAY IN JAPAN

VALENTINE'S Day is on February 14, and in Japan – unlike in other countries – the women give men gifts. The gift is usually chocolate and the kind of chocolate you receive will say a lot about the feelings of the person it is from.

There are three types: giri choco (obligatory chocolate, for colleagues and male friends), honmei choco (chocolate for the man the woman is serious about) and tomo choco (for the woman's female friends). The more expensive the chocolate the more likely it is a honmei choco. If the woman makes the chocolate herself, it is a definite sign of love.

The favour is returned to the ladies on White Day celebrated one month later on March 14. Together with (usually white) chocolate the woman might receive flowers, and if she is special to him she could even be given a piece of jewellery.

Even the most forgetful man cannot pretend that White Day slipped his mind, because department stores across Japan will display plenty of reminders as the day approaches.



Bruce and Lisa Overton from Sydney have been married 25 years and always celebrate Valentine's the Western way with a romantic dinner

RANDY'S RULER PANTS

Have you ever wondered how deep the snow was on your big powder day? Now you can measure while skiing or snowboarding with Randy Wieman's Ruler Pants.

Former pro-skier Randy came up with the idea, because "there is nowhere else in the world where these pants would be so useful". With these pants you can quote to the exact centimetre if your friends ask how deep your

day was. They are now available exclusively in Niseko at Larry Adlers, Inski, and ProSki.

Randy has skied over 200 ski resorts around the world, and was a Freestyle Skiing Champion in Europe, Australia, and New Zealand. He decided to make Niseko his "northern hemisphere" home in 2004, after experiencing first-hand why this place is known as the powder capital of the world.



measure the powder while skiing

* NISEKO NEWS // tracking down local stories

YOUR GUIDE TO YUKITOPIA

Kutchan's winter festival, Yukitopia, kicks off on Saturday, February 18 with several not-to-be-missed activities.

Brave skiers and snowboarders can participate in the "gliding across icy water" competition and get their share of the ¥200,000 prize money. If ten people make it across the water pond, each person will receive ¥20,000. Registration starts from 10am at the head office of the event on Sunday, February 19.

If you love hot pot, don't miss the nabe (hot pot) Extravaganza in which eight teams will be competing for ¥30,000 prize money and the "Best Yotei Nabe Award". Each team will prepare 100 portions of nabe for the spectators

and judges.

During the weekend-long festival you can also enjoy bobsled games, snowball fights for adults, a "Mochi" shower, snow lantern displays, igloo making demonstrations, music performances, a "Flying Boot Show" and... too much to list it all. We've compiled some Yukitopia events in this issue's "In the Loop" (page 12) as well as on Powderlife.com.

Yukitopia takes place in Kutchan's Chuo Park, with regular free shuttle busses running between Hirafu and Kutchan.



try your luck gliding across icy water

TOHOKU SUPPORT RAFFLE – DONATE ¥500 FOR YOUR CHANCE TO WIN!

LOOKING for a way to support a great cause and a chance to win some awesome Niseko prizes? It only takes ¥500!

This past summer, Niseko's community joined forces to welcome over 420 visitors primarily from the Fukushima area. These guests, mostly mothers and children, took refuge in Niseko, enjoying the opportunity to play outside, relax, and escape the stress of living near the tsunami-affected nuclear reactor on the Tohoku coast.

Building on the success of the Niseko Tsunami Relief Summer Program, the same volunteer team is running a raffle this winter to raise money for the NGO JEN, which continues to work in Miyagi prefecture and elsewhere to provide necessary disaster relief and community rebuilding assistance to those affected by the March 2011 disaster. Each raffle ticket is only ¥500 and gives you a chance

to win a stack of great prizes, including a one-of-a-kind Burton snowboard signed by Jake Burton himself, luxury stays at properties in Niseko and Thailand, local meals, ski and snowboard gear, rental packages, lift passes, on-snow adventure and photography tours, and more! The prizes have been generously offered for free from over 40 Niseko-area businesses.

You may have seen the red signs around town advertising the raffle, and we hope that you are willing to spare a beer in favour of donating ¥500 to Tohoku support. If you haven't entered yet, there is still plenty of time! Tickets are on sale until March 10, and the drawing will be held on March 11.

Like the summer program, this project is a community effort, and we encourage everyone to spread the word about the great prizes available and the great work JEN currently does. Get

involved, support a good cause, and have a chance to win!



For more information and to see a list of all the great prizes on offer, please visit <http://www.nisekowinterfestival.com/raffle>. To learn more about the NGO we are supporting, check out <http://www.jen-npo.org>.

By Max Friedman, Niseko Promotion Board

SNOW CAVERN OPEN IN NISEKO VILLAGE



photos // raphaël rochi – niseko photography

"SETSUDO" or snow cavern, is the newest and biggest snow and ice creation by artist Hirohiko Takenaka (left).

The snow art installation is open for exploration in Niseko Village, next to the Hilton, from 2pm to 7pm daily until the beginning of March.

It's Sapporo-born Hirohiko's seventh winter in Niseko building snow and ice creations. It took him almost two months and the help of his friends to build Setsudo, using only Niseko's powder and the water from two hoses. For more information check out this issue's Flash page or go to powderlife.com.



View from inside Setsudo

HIRAFU • MIDDLE VILLAGE

ONLY ONE
REMAINING

Seseragi Residences comprise two luxurious houses designed by Riccardo Tossani with a cliff top, middle village location and Yotei views. Each house is appointed with four bedrooms, four bathrooms, private garden, roof top terrace, fireplace, lock up garage and outdoor Jacuzzi.



info@seseragi-residences.com
www.seseragi-residences.com

SESERAGI
RESIDENCES



SHIFT_the way you move

X-TRAIL

We welcome you with a large range of Nissan Lineup for a test drive. Leasing and maintenance also available.

Contact: Mitsuhiro IKEJIMA (Mr.)

Tel: 011-641-1123

<http://www.sapporo-nissan.co.jp>

SAPPORO NISSAN MOTOR CO.,LTD.

get involved, help out and win!

A STAY IN A LUXURY THAILAND VILLA, A SIGNED BURTON SNOWBOARD & MORE!

Buy a raffle ticket for 500yen for a chance to win one of these great prizes!



after niseko's powder...

- 3 days at one of Zekkei Property's resort villas (in either Thailand or Niseko!)
- Jake Burton signed 'Burton Amazing' Snowboard
- Dinner for four at The Barn, Niseko
- One week at Niseko Freedom Inn & MUCH MORE!

HOW TO ENTER:

- 1 Buy a raffle ticket for 500 yen from one of our sponsors
- 2 Write your email and name on your ticket and keep the stub
- 3 Check your email, March 11, 2012, to see if you've won!

BUY YOUR TICKETS FROM ONE OF THESE SPONSORS:

Demo, Powderlife, Taiga, Rhythm, Nisade, NBS, Ski Japan, Larry Adler, Downtown Cafe, Umbrella Bar, Tuktuk, M Hotel & Tamashii

FUNDRAISER INFORMATION
All proceeds from this event will support NGO JEN's rebuilding and assistance work in Miyagi Prefecture, Tohoku

JEN
www.jen-npo.org



NISEKO TSUNAMI RELIEF

Visit www.NisekoWinterFestival.com for more information, sponsors & distribution points

print & logo design donated by: **ND NISEKO DESIGN**

WINNERS ANNOUNCED MARCH 11, 2012 (via email)

* IN THE LOOP // what's on around town

FEB 2012



12 Koryu Drumming
鼓流ドラム

Come and watch a live taiko drumming performance outside Hokkaido Tracks, Hirafu. Audience participation is encouraged!

ラビ羅夫の北海道トラックスで太鼓の生演奏があります。参加もできますよ!

Start // 7.00 pm
Place // Outside Hokkaido Tracks @ Yama Shizen
Contact // 0136 21 2551



13 Pre-Valentine's Sweets Day
プリバレンタイン スウィーツデー

Jojo's Café will be selling their house-made Valentine's Day sweets for you to buy for your loved ones.

ジョージョーズカフェでバレンタインデーにちなんでのホームメイドスイーツを愛する人に向けてみては?

Start // 11.00 am
Place // Jojo's Café above NAC
Contact // 0136 23 2003

14 Valentine's Day Party
バレンタインデーパーティー

Special chocolate based cocktails for ¥500. Chocolate sweets will be given away all night!

チョコレートベースのスペシャルカクテルが500円で提供されます。その日、無料でもらえるチョコレートもありますよ!

Start // 5.00 pm
Place // Ezo Pub @ the Hilton
Contact // 0136 44 1111

14 Valentine's Day Chocolate Hunt
バレンタインデー チョコレートハント

Hidden in the Niseko Village gondola cabins are chocolate gift tickets. If you find one you will receive a chocolate gift!

チョコレートギフトチケットがニセコビレッジの Gondola キャビンに隠れています! 見つけてチョコレートギフトをゲットしてね!

Start // 8.30 am
Place // Niseko Village gondola
Contact // 0136 44 2211

14 Graubunden's Valentine's Day
グラウブュンデン バレンタインデー

Take your partner to Graubunden for the Valentine's special. Any slice of cake + coffee or tea for ¥700. Any sandwich + a cup of soup for ¥900. パートナーをグラウブュンデンに連れて行くとき素敵なプランが。ケーキとコーヒー/紅茶 700円 or サンドウィッチとスープ 900円

Start // 8.00 am - 6.30 pm
Place // Graubunden in Izumikyō 2
Contact // 0136 23 3371

15 Drink tequila like a Mexican!
メキシコ人になりきってテキーラを飲もう

Tequila tasting, sombrero wearing, salsa dancing, and moustache madness. Sombrero provided! ¥1000 for chilli con carne. テキーラのテイasting有。サンボレロを被って髭をつけてサルサを踊ろう! サンボレロを持参の方にはチリコンカンを1000円で提供。

Start // 6.00 pm
Place // blo*blo
Contact // 0136 22 1269

16 Cocktail pairing night
カクテルペアナイト

¥3500 for a selection of piccolo cocktails and a pairing of cheese and cured meats. RSVP by February 15. Open until 3am.

Temperanceで3500円でピッコロカクテル、チーズと漬ミートペアが提供されます。2月15日までに参加予約が必要です。

Start // 6.00 pm
Place // Temperance Bar
Contact // 0136 21 5833

17 Japanese Cultural Tour
パジャパニーズ カルチャーツアー

Enjoy a tea ceremony, an iaido sword demo, a taiko drumming demo, a sake-brewery tour, and a Japanese dinner. Cost: ¥5000. Please call for reservation. 茶道、居合道のデモ、太鼓のデモ、酒製造ツアーそして最後には日本食のディナーなど4時間半のツアーに参加してみませんか? 5000円で参加できます。要電話予約。

Start // 3.00 pm
Place // Departs from outside Seicomart
Contact // 0136 23 0222

18 Yukitopia Festival
雪トピア祭

Come and judge the ultimate hotpot at the Yukitopia Nabe Extravaganza. For more info on bus routes and timetables go to powderlife.com

雪トピア祭で鍋大賞コンクールなどが行われます。バスのルートや時間表は powderlife.com をご覧ください。

Start // 11.30 am
Place // Kutchan Central Park
Contact // 0136 56 8009

19 Yukitopia Festival
雪トピア祭

"Glide Across the Water" competition. Ski or snowboard over an icy pit of water for a chance to win your share of the prize money. Registration will take place on the day of the event. Space for 100 participants. 水面滑走トライアルなどが行われます。スキー or スノーボードで水面滑走にチャレンジして勝てば賞金が当たる! 参加したい方は当日参加可能 (100名ほど) 3時まで営業。

Start // 12.30 pm
Place // Kutchan Central Park
Contact // 0136 56 8009



20 Maki Lounge Happy Hour
薪ラウンジハッピーアワー

¥500 for Otaru draft beer and selected Japanese fruit liqueurs from 3pm-5pm everyday until the end of February.

2月末まで毎日3時から5時まで小樽ドラフトビール、または日本のフルーツ酒を一杯500円で提供。

Start // 3.00 pm
Place // Maki Lounge
Contact // 0136 21 6133

21 Japanese Mojito Night
ジャパニーズモヒートナイト

Come and try a Kabos Ginger, Yuzu, or Ume Mojito at Gyu+ Bar for ¥1000 each. All three are Gyu+ original cocktails made with fresh lime and mint. Gyu+バーのオリジナルカクテル、「かぼすジンジャー」「ゆず」「梅モヒート」の3種いずれかを1000円で提供。新鮮なライムとミント付き。

Start // 6.00 pm
Place // Gyu+ Bar
Contact // 0136 23 1432

22 Ladies Night @ Ezo Pub
エゾパブでレディースナイト

Special ¥500 cocktails all night for ladies only. Free shuttle buses from Hirafu to the Hilton until late. Live DJ, karaoke, and a wide selection of pub food. yakisoba. この日は女性のみ特別にカクテルを500円で提供。比羅夫からヒルトンへの無料シャトルバスは遅くまであります。ライブDJ、カラオケ、そしてパブの食べ物が出揃います。

Start // 5.00 pm
Place // Ezo Pub @ the Hilton
Contact // 0136 44 1111

24 Underground Unplugged
アンダーグラウンド アンブラグド

Hayden Weke playing live guitar in an intimate setting. Acoustic dub, reggae, and hip-hop. Open from 6pm-3am. Hayden Wekeがライブのギターとアコースティックダブ、レゲイ、ヒップホップをプレイ。午後6時から朝の3時までオープン

Start // 8.30 pm
Place // Temperance Bar
Contact // 0136 21 5833



Call for an appointment or just drop in.
Ph. 0136 22 0399 - info@nisekomassage.com

	30 minute	45 minute	60 minute	90 minute
Early bird (finish prior to 2pm)	¥3,500	¥5,000	¥6,000	¥8,000
Normal Price	¥5,000	¥7,000	¥8,000	¥11,000



Niseko Physio

Your English-speaking sports injury centre in middle Hirafu. Taping, braces, cremes and Australian trained winter sports physiotherapists.

Call for an appointment or just drop in.
Ph. 0136 22 0399 - info@nisekophysio.com



RELAXATION MASSAGE & ESTHETIC SALON

HERMOSA ANGEL

Massage (Shiatu style)

40 minutes	¥4,800
60 minutes	¥7,000
90minutes	¥10,000

Oil Massage

40 minutes	¥6,700
60 minutes	¥8,300
90 minutes	¥11,500
Foot 20minutes	¥2,800
Head 20minutes	¥3,000

The salon at 1F J-sekka Building, Hirafu Intersection.
Pick up available. On-site massage available (extra 1000yen)

Call for an appointment or just drop in.
Ph. 0136 23 2004 info@inkarebaza.com

INKA REBAZA Co.,LTD
inkarebaza.com

Getting to the airport just got easier

ホテルから空港まで



Private and Comfortable

Ride in style in a spacious, climate controlled luxury shuttle bus.
車内は広くて余裕の快適空間

Affordable and Efficient

Low price, with more room for your bags.
低額料金でしかも荷物置場はたっぷりのスペース

No fuss. No hassle. No delays.

No changing trains. No dragging your bags through stations. No standing around.
乗換え、手荷物運搬、待ち時間にさようなら

Door-to-Door Convenience

We pick you up from your hotel and take you to the airport.
札幌のホテルから空港まで直行スピーディーにらくらく移動

Rates

New Chitose Airport - Niseko
Niseko - New Chitose Airport

1 person
→ **¥6,000** one way
← **¥10,000** return

Child under 6
→ **¥4,000** one way
← **¥7,000** return

→ **Private Transfers**
from **¥28,000** one way

Niseko Scheduled Transfer Services (Available 1 Dec thru 31 March)

Niseko - New Chitose Airport		New Chitose Airport - Niseko		Niseko - Sapporo City	
Departs Niseko	Arrives Airport	Departs Airport	Arrives Niseko	Departs Niseko	Arrives Sapporo
08:00	10:30	12:00	14:30	09:30	12:00
09:00	11:30	14:00	16:30	Sapporo City - Niseko	
10:00	12:30	15:00	17:30		
11:00	13:30	16:30	19:00	Departs Sapporo	Arrives Niseko
15:00	17:30	19:00	21:30	12:30	15:00
17:00	19:30	21:30	23:59		

If the timetables above do not suit your requirements, please consider our Private Transfer Services. Services may depart/arrive at different times due to road and/or weather conditions, flight delays and/or airport closures.



www.skybus.co.jp
Tel: 0136 555 301
Email: info@skybus.co.jp

Airport Service • Trips and Excursions • Ski Shuttle
Secure VIP Transfer • Wedding Hire • Chauffeured Charter
Licensed Travel Agency 2-589



* SNAP

MEET THE LOCALS



Name // Rick Morris

SKI instructor Rick Morris works for NISS and lives in Kutchan for 5 months of the year, and the rest in King's Cliff, Australia with his childhood sweetheart of 40 years. They first came to Niseko in 2004, loved it, and decided to make it their winter home.



Name // Kimiko Shimizu and Hugh James Dellit

KIMIKO Shimizu from Kobe and Hugh James Dellit from Brisbane first worked together in Cardrona, a ski resort in the South Island of New Zealand. Now they are working another season together in Niseko at NAC.



Name // Tabatha Turley

TABATHA Turley from Sydney is a ski instructor for NBS, and this is her second winter living in Niseko. Last summer she stayed in Japan to teach English in Kutchan, and she loved the summer lifestyle here. This summer her plan is to be planless.

Question // How will you celebrate Valentine's Day?



KANA, Chiho, Mariya, Ayaka, Momoka, and Eri from Kyushu are all planning to send their boyfriends and future boyfriends lots of chocolate!



ASTER Chan and Bruce Mui from Hong Kong celebrate it as a "family day" with their son **Ryan**. Once he gets a girlfriend, mom and dad are planning to properly celebrate Valentine's Day again.



TIMMY Upson and Drash Randall like to celebrate the Japanese way where the woman makes chocolates for the man, and **Wolfgang Libersmith** (right) likes to golf alone.



MARINA Katayama from Gunma is planning to make chocolates for **Masakazu Sasano**, and maybe dinner if he's lucky!

PROSKI STACK

WIN
ENTER TO WIN A
HELMET FROM
PROSKI



ENTER TO WIN A HELMET FROM PROSKI

MAYBE you don't usually wear a helmet? But perhaps you had a painful wake-up call and realised it might not be such a bad idea after all. Send us your best Niseko stack photo with a short description on how you ended up in such a mess. Email your photo and you could win a helmet from ProSki.

Submit entries to kerstin@powderlife.com

* FLASH



photos // raphael recht - niseko photography

Local staff Kanako Ueno and Mika Sasaki make sure visitors don't slip on ice

SETSUDO

OPENING CEREMONY//

"Setsudo" or snow cavern is Niseko Village's newest attraction. Artist Hirohiko Takenaka and Niseko Village officials held the opening ceremony during sunset, when Setsudo was illuminated. Takenaka-san said the unique snow and ice creation was inspired by Niseko's nature and took two months to build.



Artist Hirohiko builds his sculptures according to his intuition and not based on any plans



The view from inside is especially stunning



Setsudo manager Hiromi Kimura and Niseko Village official Kazuho Furugori happy to answer any of your questions



Setsudo is illuminated in the evenings



photos // glen claydon

A bird's-eye view of the Australian Chamber Orchestra performing at the Hilton Niseko



The ACO was supported by Japanese guitarist Yasuji Ohagi



Fan Yuko Kaminishi didn't mind queuing to get Richard's autograph

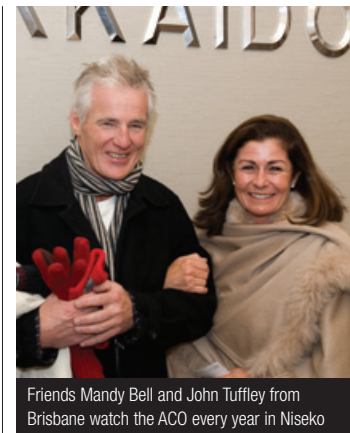
THE HILTON NISEKO

AUSTRALIAN CHAMBER ORCHESTRA //

The Australian Chamber Orchestra (ACO) kicked off the Niseko Winter Music Festival at the Hilton Niseko, performing Vivaldi's Four Seasons, Mendelssohn's Octet and a tribute to iconic English musician Nick Drake, amongst other classics. It was the ACO's third consecutive year performing and skiing in Niseko.



Billy and Eva Fung from Hong Kong enjoyed Vivaldi's Four Seasons the most



Friends Mandy Bell and John Tuffley from Brisbane watch the ACO every year in Niseko

* NISEKO STREET FOOD



TAJ MAHAL

Whether you are craving a garlic nan and hot chai for late breakfast or a hearty chicken curry and cold Kingfisher beer in the middle of the night, the Taj Mahal van is open every day from 10.30 am until half past midnight. Dev Singh from Delhi and his colleague take turns in making the Samosas, Tandoori Chicken, Curries and other authentic Indian food right before your eyes.

The van is conveniently located between Hirafu's Seicomart and the bus stop – you cannot possibly miss it, it's bright red.

If you prefer sitting inside while enjoying your food, the Taj Mahal restaurant is just a three-minute walk from the van.



HOKKAI DOG

MASA Nagashima from Saitama serves plain dogs, hokkai dogs (with tomato sauce), and chilli dogs (with homemade chilli sauce) from 8.30am-6.00pm everyday. He also sells spicy fried Hokkaido potatoes. Masa-san travelled all over the USA last summer and collected licence plates from 50 states. You can see them on display on the inside of his brand-new Hokkai Dog van parked across from Hirafu-tei on Hirafu-zaka.



GREEN CURRY BUS

Take-san, owner of the green curry bus, is from a small town near Kyoto and has been cooking and selling delicious curries from his bus for four years. In the summertime he is a white water rafting guide and also drives his curry bus to a few festivals. In the winter he is selling green chicken curry in Niseko full-time, and this year he is parked just up the street from Hirafu-tei on Hirafu-zaka. Take-san says his curry is the best because he uses local vegetables, coconut milk, and lots of love!

ELVIS – KING OF KEBABS

There can only be one king, and the title of King of Kebabs has been claimed by Elvis (far right) for the past three seasons.

Elvis, originally from Wales, lived in Tokyo for 13 years and made kebabs in a friend's shop. He came to Niseko for a visit and ended up opening his own kebab business.

Elvis spends his mornings preparing his special kebab sauces and the fresh chicken. You can choose from a variety of dishes – he sells potato kebabs, vegetarian kebabs, kebab curries with rice, chicken kebabs, wraps and more.

You can find Elvis at his stall from 3pm to midnight every day. It's located between SkiJapan and New White Bear (map p.39, E3)



CAFÉ CRÊPE

Located just outside Blowhard Lodge at the top of Hirafu-zaka, Nabe-san offers 42 different crepes from his brightly decorated van. Originally from Nagoya, this is his fifth season in Niseko serving sweets and crepes. During the summertime he runs a roadside food shop behind Mt Yotei. His recommendations for his best crepes are the apple crumble and vanilla ice cream, and the banana chocolate. He also makes savoury crepes with ham, cheese and egg.



P.I.C. HAMBURGER

Originally from Osaka, this is Manabu Horie's second season making tasty burgers in Niseko. When the season ends he is planning to drive to Sapporo and Honshu to continue selling his burgers throughout the spring, summer and autumn. Manabu-san likes to travel and move around, and this is why he loves his job. Come and try his lamb, teriyaki beef, shrimp and potato burgers from his van parked outside of blo*blo bar.

KAMIMURA

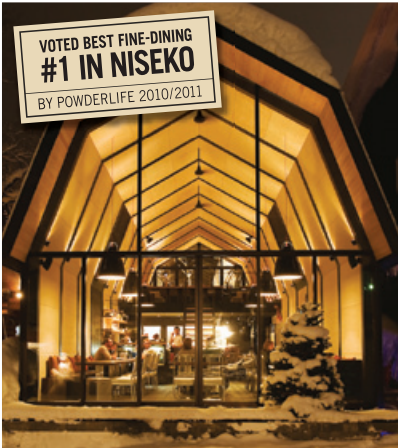
FIRST FLOOR, YAMA SHIZEN WEST



Open 6:00pm - late
Reservations essential - 0136 21 22 88

www.kamimura-niseko.com

VOTED BEST FINE-DINING
#1 IN NISEKO
BY POWDERLIFE 2010/2011



NISEKO'S ONE
AND ONLY ALPINE
BISTRO AND BAR.

WWW.NISEKOBARN.COM
TEL 0136 23 0888



STAY · DINE · EXPERIENCE



J-SEKKA

a taste of hokkaido



CAFE & DELI, LOUNGE BAR
& LUXE SUITES



VISIT OUR ONLINE SHOP
J-SEKKA.COM · 0136 21 6133

MONTY'S

BBQ & PUB

SERVING AUSTRALIAN & AMERICAN STEAKS
ON TEPPANYAKI



BAR 5PM TILL LATE
RESTAURANT 6PM | 10PM
TEL | 0136 5559 89

170-145, Aza Yamada, Kutchan -Cho, Abuta-Gun. Hokkaido



M Hotel Basement Open DAILY 3pm-11pm

* IRASSHAIMASE // “welcome!” – great local businesses



SUSHI RIDERS, Izumikyo II, Hitoshige Nishikawa

SUSHI Riders is 28-year old Hitoshige Nishikawa's first business, which he just opened in December. Originally from Osaka, he spent last season working in Anupuri thinking that a sushi delivery service was missing in the area. Hitoshige has been working in the food industry for many years and makes sure that only the freshest Hokkaido seafood is used in his handmade sushi. He prepares the food in a friend's kitchen in Izumikyo II and delivers all over Niseko. Apart from a variety of affordable sushi rolls, he also makes grilled, fried and sautéed meat dishes as well as Tempura sets. For delivery call him on 0136 23 3771

西川 仁茂さんの泉郷 II にある「Sushi Riders-寿司ライダーズ」

西川 仁茂さん (28) の初めてのビジネスがこの「Sushi Riders」。去年の 12 月からオープンしている。大阪出身の西川さんは昨年、アンヌプリで仕事をしている時に『この地域には寿司のデリバリーが必要だ』と思い始めた。仁茂さんは食品の業界で何年も勤めており、今回の Sushi Riders では北海道の新鮮な魚介類のみを手作りのスシに使用。泉郷 II の友人のキッチンで食材は用意され、ニセコ地域にデリバリーされる。色々な種類のスシロールの他にトンカツやテリヤキチキン、天ぷらセットなどもメニューとしておかれている。「Sushi Riders」のデリバリー番号は0136-23-3771。皆さん是非ご賞味を!



SAIKA yakitori, Hirafu Lower Village, Takeshi Nakayama

IF you want to try one of the best yakitori in the area, you no longer need to go to Kutchan. In December 2011, Takeshi Nakayama moved his yakitori restaurant Saika to Hirafu's lower village due to popular demand. The secrets to Nakayama-san's yakitori are a special salt blend that his yakitori "sensei" passed on to him, and using only fresh meat cut to order. Chef Nakayama also only advertises by word of mouth. He lets the taste of his yakitori do the advertising for him. If you want to try Saika's yakitori, make a reservation – it's always busy. Open everyday from 6pm-11pm. Tel: 090 2692 5506

中山 剛史さんのローアービレッジにあるの焼き鳥屋「彩華」

世界中を旅し、カナダやスイスのスキーリゾートで仕事をしてきた東京出身の後藤 知子さん。2007年にニセコに移住をしてきた。当初、ニセコに移住したての時は色々なレストランで仕事をしてきたが、どうしても東京にいた時に働いていた友達のタイレストランが恋しくて忘れられなかったと言う。ヒラフ内でこじんまりとしたかわいらしい場所を探すのが大変だったとの事だが、2010年の末には無事「Tuk Tuk」(トゥクトゥク)がオープン。このレストランではグリーンカレーやレッドカレー、パッタイ、そしてトムヤムなど、その他多数のおいしい料理が振る舞われている。

➔ **FIND**

➔ **STAY**

➔ **PLAY**

POWDERLIFE.COM
YOUR MAGIC CARPET TO
NISEKO ACCOMMODATION

Book the best place to stay, in the best place to play. Get all the information on rates and dates right here.

www.powderlife.com

Gourmet Pizzas



DELIVERY MENU (available 5 - 11pm)

NISEKO PIZZA

WWW.NISEKOPIZZA.JP (0136) 55 5553



Margherita

M ¥1,500 | L ¥2,800



Pepperoni

M ¥1,700 | L ¥3,200



Hawaiian

M ¥1,700 | L ¥3,200



BBQ Chicken

M ¥1,900 | L ¥3,600



Vegetarian

M ¥1,900 | L ¥3,600



Andy's

M ¥1,900 | L ¥3,600



Meat

M ¥1,900 | L ¥3,600



Supreme

M ¥2,000 | L ¥3,800



Bacon Lovers

M ¥1,900 | L ¥3,600



BBQ Chicken & Bacon

M ¥1,900 | L ¥3,600



Capriccosa

M ¥1,800 | L ¥3,400



Cheese

M ¥1,500 | L ¥2,800



BBQ Ribs

M ¥2,300 | L ¥4,400



Gamberetti Parmegiana

M ¥2,200 | L ¥4,200



Genovese

M ¥2,400 | L ¥4,600



Quatro Formaggio

M ¥2,200 | L ¥4,200



Bianco & Prosciutto

M ¥1,700 | L ¥3,200



Napolitana

M ¥2,200 | L ¥4,200

Additional Standard Toppings ¥150 per topping

Anchovies . Garlic Sauce . Mushrooms . Red Onion . Capsicum Pepperoni . Italian Sausage . Pork Sausage . Ham . Bacon Pineapple . Black Olives

M 30cm
2-3 people

L 45cm
4-6 people

Additional Gourmet Toppings ¥220 per topping

Black & Green Marinated Olives . Semi-sundried Tomatoes . Prosciutto . Buffalo Mozzarella . Fresh Prawns . Grilled BBQ Ribs

Homemade Pasta

Served with fresh, locally sourced produce ... Our pasta is the taste of perfection!



Tomato Cream, ¥1,400



Bolognese, ¥1,400



Carbonara, ¥1,400



Feta & Olive, ¥1,400



Siciliana, ¥1,400



Cesar, ¥1,000



Caprese, ¥1,200



Greek, ¥1,400



Garlic / Cheese Garlic ¥350 / ¥450



BBQ / Sweet-Chilli ¥900 (5 pieces)

Salads & Sides

...& more online!

Mozzarella Sticks; Fried Potato; BBQ Chicken & Sweet Chilli Chicken Wings (5 pieces); Calamari Rings...

Soft Drinks; Dessert Pizzas; Italian Wines...



NEW LOCATION

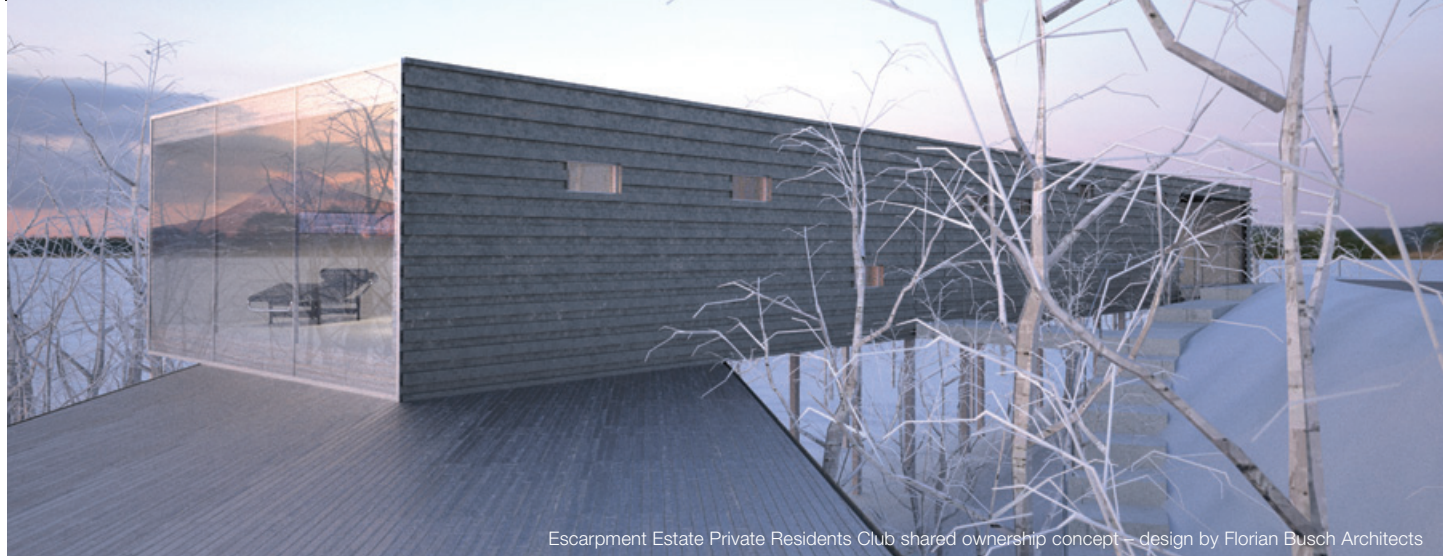
Visit us at our **NEW LOCATION**, in the J-Sekka building beside the traffic lights. Enjoy homemade pizza, pasta and succulent beef, pork and other meats from our new grill! See you soon!



INTL' BEERS ON TAP



* REAL ESTATE NEWS // following the niseko market



Escarpment Estate Private Residents Club shared ownership concept – design by Florian Busch Architects

HOKKAIDO TRACKS DEVELOPMENT OFFERING FRACTIONAL OWNERSHIP CONCEPT



HOKKAIDO Tracks Development is going to offer fractional ownership with the release of “The Escarpment Estate Private Residents Club”.

President Simon Robinson says the idea is to provide luxury resort residences that can be used, loaned, rented, exchanged or sold. It is going to be the first fractional residential resort property in Niseko Hirafu, involving ten luxury high-end residences in a gated enclave community with resort club facilities.

The usage plan of this equity based shared ownership concept is a 1/16th share, with fractional shares starting from ¥9,000,000. Sales contract and shareholders agreement will include a 5-year, 7-year and 10-year sell-

out option with the sales revenue being divided amongst the investors. Simon Robinson says, “this approach makes a lot of sense in today’s market and we are already starting to get good traction”. The logic behind the concept: Why buy 100 per cent of a two million dollar property, if you can just buy what you need for a holiday? Located on the Estate will be “the Nest”, acting as a club facility for owners and guests. Planned are a lounge bar, massage and beauty services, gymnasium, a childrens’ room with games and more.



CG image of the club house “The Nest” by KDA

A daily presentation is held in the Kira Kira office (map p.39, E2) from 5pm to 6pm. more info: www.hokkaidotracks.com

SWISS CHALET CHIC COMES TO NISEKO



THE construction of luxury private ski lodges is the next development stage for Niseko to become the ‘Aspen of Asia,’ according to Keith Rodgers, President of Taiga Project Management.

“Leading Swiss ski resorts such as Verbier, St Anton, Zermatt and St Moritz offer private ski chalet accommodation with relaxed but sophisticated luxury, supported by live-in staff to attend to all the guests requirements including cooking, cleaning and driving them to and from the ski slopes, bars and restaurants,” Rodgers says.

This style of luxury ski accommodation is coming to Hirafu with the opportunity for an owner or syndicate of owners to own

Kitsune, which is managed by Taiga project management.

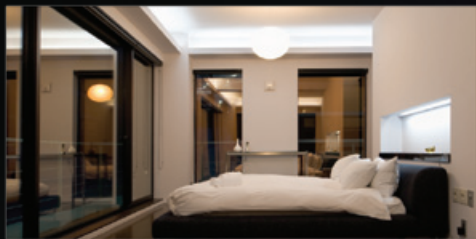
Kitsune (which means ‘fox’ in Japanese) is designed to be a chalet, a luxury boutique hotel, and a private residence all at once – mixing Swiss charm with Asian design.

It will be Niseko’s first private residence where owners and guests have the optional support of two live in staff to provide VIP service.

Located in Hirafu’s East Village, Kitsune will feature 500sqm of luxury living over three levels with a wellness spa including Jacuzzi, sauna, and massage/beauty rooms. The double sized en-suite bedrooms will be the largest in Niseko, giving each guest an abundance of space to stretch out and relax.



For more information visit: www.chaletkitsune.com



Private residence for sale
A masterpiece of exterior and interior design

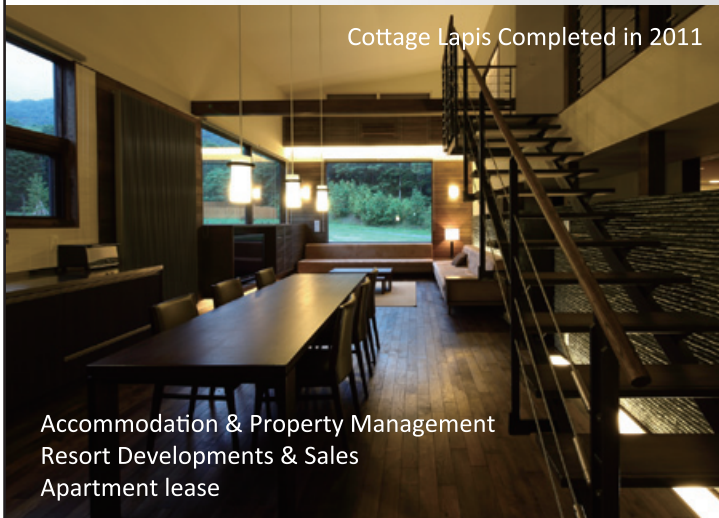
www.ezoviews.com
info@ezoviews.com

NISEKO IZUMIKYO

Since 1973

www.izumikyo.co.jp

Cottage Lapis Completed in 2011



Accommodation & Property Management
Resort Developments & Sales
Apartment lease

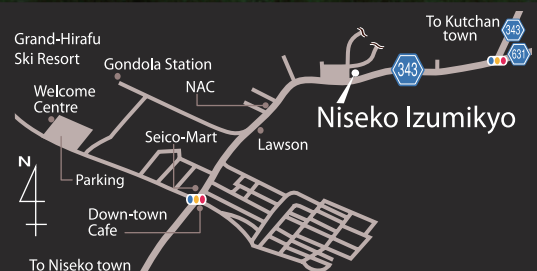
For over 30 years Niseko Izumikyo have been applying our local know-how and experience in Niseko to resort development, real estate sales and property management and rentals.



Offering quality service all year round

Niseko Izumikyo

Izumikyo Management centre
8:00 am - 9:00 pm
+81-(0)136-23-3301
rental@izumikyo.co.jp



* POWDER POSTER



LOCATION mt yotei // PHOTOGRAPHY glen claydon // RIDER jesse flanagan



Brought to you by





photo // azza - niseko photography // location backcountry // skier will martin



photo // yasu - niseko photography // location chise backcountry // skier Kiichi

* 1000 WORDS



photo // yasu - niseko photography // location hirafu // skier tom rourke



photo // azza - niseko photography // location minahachi // skier teddy



photo // yasu - niseko photography // location hirafu peak // skier yohei

FAT skis monitor rentals
 ¥4,700 → ¥3,000
Rentals for seniors (age + 60)
30% OFF

SEICOMART
 Lawson
 Monty's M Hotel
 ★ here

Mountain Shop
Niseko 343
 SINCE 1993

TEL 0136-23-0343
 more details : www.niseko343.com

Looking for a budget Hotel in Sapporo?

Single **3,500yen!**
 Double **4,200yen!**
 Twin **6,500yen!**
 ★including light breakfast

1 min.walk from Nakajima Park sbwy Station
 3 min.walk to Susukino Town!

HOTEL SHOW SAPPORO
 + 81 (0)11-511-2221 (sending mail preferable)
 mail to: Info@sho-susukino.com
<http://www.sho-susukino.com/eng/>

JAC **MYOB**
 Certified Consultant

Chartered Accountant; MYOB Consultant for 15 years; 30 years accounting experience; Niseko based

Understand & take control of your business and investment with JAC & MYOB solutions.

Management accounting; MYOB set-up; training & trouble-shooting; tax return preparation; bookkeeping; remote assistance throughout Japan...

Easy to use; customizable; powerful; affordable; internationally acclaimed; PC or Mac; free test drive...

www.jonathanamos.com · +81 (0)90 2650 4909

Thank you!
NISEKO HIRAFU
5th

NEW! Hirafu Gondola

NEW! Grand HIRAFU Mountain Center

NEW! Kids Lesson Area

NEW! Tanta·an
 (Grand HIRAFU Mountain Center 2F)

Cafe&Bar 9:30-20:00 Meals 11:00-16:00

NEW! Web booking

NISEKO MOUNTAIN RESORT
Grand HIRAFU

<http://www.grand-hirafu.jp>

ひらふ温泉郷 Hotel Niseko ALPEN TEL 0136-22-1105

Restaurant Slalom (Dinner ¥4,300)	Shokusai Hirafu (Sashimi Chirashi ¥3,200)	Cafe Edelweiss (Handmade Sweets ¥500~)
Swimming pool	Open air hot spring bath	Bedrock sauna bath

* BACKCOUNTRY // stay safe on the mountain



photo // niseko photography

WITH the adrenaline rush of riding through deep untouched powder, it is easy to forget that this exhilarating experience in the backcountry can quickly turn into a nightmare if you are not prepared.

Niseko has a liberal stance toward backcountry snowboarding and skiing, so you are the one who has to make responsible decisions. When venturing into unpatrolled areas, preparation is vital.

Powderlife has compiled some top tips to keep you safe on the mountain.

1. If the backcountry's closed, it's for a reason! Learn and obey the Niseko Rules. They include limiting access to the out-of-bound areas and restricting entry during hazardous conditions.
2. Read and understand weather and avalanche reports posted in Japanese and English at entries and exits to the backcountry.
3. Know where the ski patrol is located. Once an incident gets to a certain level, know where to go and who to contact for help.
4. Let someone reliable know where you plan to go, your destination and what time you plan to be home.
5. Explore the backcountry with experienced and reliable people. The least experienced person in the group should still know what to do in case of emergency.

6. Make sure everyone is familiar with equipment, which should include a shovel, beacon, probe.

7. No-go areas include Yu no sawa (between Annupuri and Niseko Village), and Haru no taki (cliff area west of Hirafu). All no-go areas are well sign-posted and marked on resort maps.

8. We strongly suggest using a qualified guide, especially beginners.

9. Ducking ropes may result in you losing your lift pass.

10. Always remember YOU are responsible for your own decisions and safety.

Daily Avalanche Report
<http://niseko.nadare.info>

Powderlife's Backcountry Guide

www.powderlife.com

// 'Backcountry basics'

// 'Inside a 2-day avalanche course'

// 'Lost in the backcountry'

// 'How to build a snowcave'

FREE BACKCOUNTRY INFORMATION SEMINAR //

Topics // Niseko Rules, safe backcountry travel, terrain evaluation & search techniques with the guides from Black Diamond Lodge.

Location // Black Diamond Tours head office (Niseko Village) - catch the bus to the Niseko Village area & get off at the Milk Kobo stop.

Time // 6-7pm every Tuesday during winter. First Session Dec. 20th

SITE ANALYSIS . RESIDENTIAL . CONDOMINIUMS . RESORTS . HOTELS . RESTAURANTS . RETAIL . DEVELOPMENT
PLANNING . INTERIORS . LANDSCAPE DESIGN

riccardotossani
architecture

ARCHITECTURE
PROJECT MANAGEMENT
PLANNING

N I S E K O + T O K Y O

www.tossani.com

info@tossani.com
+81 (0) 3 5457 1032

GIORGIO ARMANI . APEX LOFT . THE ROCKS . FOREST ESTATE . ESCARPMENT . SESERAGI
AKATSUKI . HANAZONO RESORT

RESORT GUIDE



POWDERLIFE is your Niseko Travel Guide – in print and online. With www.powderlife.com and *Powderlife Niseko* magazine, you'll discover the essential information for the perfect holiday.

During your stay, experience Niseko's restaurants, bars and cafés, where you can feast on anything – from the most authentic sushi to beautiful local sake. Make the most of your skiing and boarding with the specialist ski and snowboard stores and mountain guides around town.

Inside you'll also find *Powderlife's* onsen guide, short history of the area and village maps.

For everything else visit www.powderlife.com/niseko-resort-guide.

TOURIST INFO

Kutchan Information Centre

Plenty of brochures and English-speaking staff.

Location: Main Street, Kutchan (Map p.38, A4)

T: (0136) 22 1121.

The Niseko Grand Hirafu Welcome Centre

Wide range of brochures from the area and transport information.

Location: Top of the main street (Hirafu Zaka)

in Hirafu - Map: p.39, E1

T: (0136) 22 0109.

GETTING HERE & THERE

New Chitose Airport.

For departure and arrival times.

T: (0123) 23 0111

W: www.new-chitose-airport.jp/language/english

Getting from New Chitose to Niseko

Bus: This is a cheap and efficient option.

Buses leave every 30 minutes from the airport to Niseko and take about three hours (includes rest stop and drop off at Rusutsu). Companies providing this service: Whiteliner Buses, Chuo Bus, Donan Bus and Hokkaido Resort Liner. Visit the Welcome Centre for bus bookings back to Chitose. ¥2300 approx. (one way) or ¥3850 approx. (roundtrip).

Door-to-Door Transfer Skybus offers a door-to-door transfer service to and from the airport to Niseko, or Sapporo.

T: 0136 555 301

W: www.skybus.co.jp

Train This is the most scenic route to Niseko. There is no direct train from Chitose to Kutchan Station (closest major station to Hirafu), and all

trains run through Sapporo and Otaru. You will be required to change platforms. ¥2600 approx.

T: (0123) 45 7011 – Airport Station

T: (0136) 22 1310 – Kutchan station

W: www.japanrail.com

CAR RENTAL

Niseko Auto Rentals

Specialising in large 4wd 7-8 passenger vehicles: Delica Space Gear and Toyota Hiace.

T: (0136) 44 1144

W: www.bdlodge.com

Toyota Rent-a-Car ShinSapporo

One-way hire from Chitose to Hirafu is about ¥7000 for six people/24 hours. Pick up at Chitose airport, Sapporo or Kutchan

T: (0118) 15 0100 (English ok!)

The *Powderlife* website has some great tips on how to drive on snow as well as good contacts if you have an accident.

www.powderlife.com/niseko-travel-guide

TRANSPORT AROUND NISEKO

Taxis: Drivers probably won't speak English so you will need a business/place name and map for where you are going.

T: (0136) 22 1212 Kutchan Hire // (0136) 22 1171

Misora Hire // (0136) 44 2635 Niseko Hire.

Bus

Niseko United Shuttle: Connects Hirafu, Niseko Village and Annapuri resorts. Pickup/drop-off points in Hirafu include Hirafu Gondola and the bus stop near Hirafu intersection.

¥: Free if you have an all-mountain pass // 1 point if you have a 12-point mountain pass // ¥500 Adult and ¥300 for child.

Grand Hirafu Village shuttle bus:

Shuttle buses run throughout Hirafu every 15 minutes, all day, every day, until the end of night-skiing.

¥: Free

Hanazono Shuttle bus:

Travels throughout Hirafu Village and out to Hanazono from 7.50am to 6pm. Look out for the blue buses.

¥: Free

Kutchan Night Go bus:

Runs to and from Hirafu to Kutchan Station every night. ¥: ¥200 for 1 week pass/¥500 for a season pass.

MONEY

ATM Locations

Hokkaido Tracks Holiday's Office, Hirafu

Map: p.39, E2

Accepts: All major cards

Kutchan Main Post Office

Map: p.39, E3

Accepts: All major cards

7 Eleven

Map: p.39, C1

Accepts: Visa Plus, JCB, AMEX, Dinners Club, Discover, China Union Pay

Credit Cards Lift tickets, ski hire and ski lessons can all be paid for by credit. Most large restaurants offer credit card facilities too, however some small businesses are cash only. Check with your retailer before purchasing.

Currency Exchange Kutchan Post Office and Hokuyo Bank - Map: p.39, B3

RESORT GUIDE

SHOPPING

For everything from toothpaste to alcohol and late-night snacks try:

Hirafu

Seicomart – Map: p.39, D3

Lawson (24 hours) – Map: p.39, E3

Piz Gloria – Map: p.39, D2

Alpen Hotel – offer a smaller range of snacks and drinks. Map: p.39, E1

Sekka Deli – gourmet items from Hokkaido.

Map: p.39, F2

Niseko

Maeda Shoten near the Post Office in Niseko, is a superette and liquor store.

Hanajizou Bakery sell fresh bread and pastries in store on Tuesday every week.

Kutchan

For a big shopping trip, it's worth venturing into Kutchan Town.

Homac for household products.

Map: p.38, G3

MaxValu for all your food supplies.

Map: p.38, G3

Best Denki for all your electrical and technical needs. Map: p.38, C4

M-Pocket for imported groceries and alcohol.

Map: p.38, A3

¥100 store if you're on a budget

Map: p.38, B4

TELECOMMUNICATIONS

Internet

J-Sekka Deli and Downtown Café have free Internet terminals.

Mobile Phones

Only 3G phones will work in Japan. Some accommodation providers offer mobile phone hire.

Domestic Calls

Green and grey public phones take coins or pre-paid telephone cards. Local calls don't require the '0136', unless made from a public telephone.

International Calls

Dial (010) and then the code of the country you wish to call. If the number starts with 0 – drop the 0 and dial everything else.

POST OFFICE

Look for the red '〒' symbol. There are three post offices in Kutchan and two in Niseko town. In Hirafu, post-office services are available at Piz Gloria and Seicomart.

ELECTRICITY

Standard voltage is 100v AC. You can use most electronic items without a problem, but some high watt devices such as hairdryers may not run on full power. Plugs are the international standard (flat, two-blade type).

MEDICAL SERVICES

Kutchan Kousei Hospital

No appointment necessary.

Map: p.38, A3

T: 0136 22 1141

Niseko Physio

The only acute sports injury specialist in the village.

Map: p.39, B2

T: 0136 22 0399

Tsuruha Drug (red signage) pharmacy.

Map: Route 5 and Route 343. (p.38, G3)

STAY SAFE AROUND TOWN

No skiing/boarding on roads or footpaths

While it may seem much quicker and easier than walking, skiing and snowboarding home from the hill is dangerous and is frowned upon by locals.

One third of all injuries in Hirafu are caused by people falling on the street. Wear shoes with a good grip or buy and attach rubber sole cleats with metal studs.

Be careful when walking or parking your car under roofs

Heavy snow slides from rooftops in Niseko. The snow slides can seriously damage your cars too.

Drinking Dangers

Make sure you leave the bar with someone else. Also make sure you rug up and stay warm – people have been known to fall asleep in the snow on the way home. If you do notice someone who is intoxicated, report them to the police or the safety hut located outside Seicomart.

RUBBISH GUIDE

What is burnable rubbish? (燃えるゴミ moeru-gomi)

Contrary to what most of us are brought up to believe, burnable rubbish includes plastics, as well as paper and food scraps.

PET bottles and cans (ペット缶)

Plastic drink bottles (with lid/label removed) and aluminium/steel drink cans

Compost (生ゴミ nama-gomi)

When available, compost bins are for food scraps. Though be careful, tea bags are not considered compost.

Non-burnable rubbish (燃えないゴミ moenai-gomi)

Non-burnable rubbish is for rubbish that doesn't fit the other categories, including items such as broken glass, ceramics and metals.

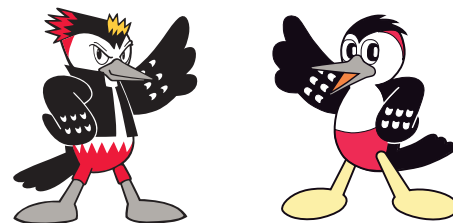
What can you do to help keep Niseko beautiful?

Take a second to be sure you're throwing your garbage in the correct bin

For more information visit

www.town.kutchan.hokkaido.jp

www.town.niseko.lg.jp



Niseko Town mascots Anniky and Nicky (above) are two brothers based on the Great Spotted Woodpecker - Akagera - that lives in the Niseko area and can be seen on a regular basis.



Kutchan Town mascots: Little fat skiing potato boy Jagatakun and his snowboarding girlfriend Jagako (above).

RESORT GUIDE

ONSEN GUIDE

Powderlife's guide and onsen (hot spring) etiquette tips will help you fall in love with this quintessential Japanese experience.

Yukoro Onsen

T: 0136 23 3434 (Hirafu map p.39, B4)

Hotel Niseko Alpen

T: 0136 22 1105 (Hirafu map p.39, E1)

Hilton Niseko Village

T: 0136 44 1111 (Higashiyama map p.38, G7)

Green Leaf Hotel Niseko Village

T: 0136 44 3311 (Higashiyama map p.38, G7)

Niseko Grand Hotel

T: 0136 58 2121 (Annupuri map p.38, A8)

Kanro no mori - (private onsen available)

T: 0136 58 3800 (Annupuri map p.38, A7)

Niseko Kira no yu (infront of Niseko Station)

T: 0136 44 1100 (private onsen available)

ONSEN ETIQUETTE

What to bring?

Bath towel, modesty towel and toiletries. Most onsens provide body soap and shampoo, and sell modesty towels for about ¥200.

How much?

Most onsens range between ¥600 to ¥1000.

What to do?

1. Enter the changing room through the appropriate door: 女 for women, 男 for men.
2. Remove your clothes and put them in the basket or locker provided.
3. Have a shower before entering the onsen. Rinse yourself thoroughly and then your shower cubicle before going into the onsen.
4. Use the modesty towel when walking into the onsen then gracefully slide into the water – never jump.
5. Don't let your towel enter the onsen water – just rest it on your head or on a rock on the side of the onsen.
6. Soak, contemplate and relieve your sore muscles.
7. Dry yourself off before going back into the change room, as best you can.

Many onsen have rooms where you can relax, drink a cold beer or tea, or even sit in a massage chair.

LOCAL HISTORY

WHAT does Niseko mean?

'Niseko' was the name originally given to the area by the Ainu, Hokkaido's indigenous people, and means 'a cliff jutting over a riverbank deep in the mountains'. Nupuri is the Ainu word for 'mountain'. Put it all together and Mt Niseko Annupuri (the mountain that is home to the Niseko United resorts) means 'a mountain which has sheer cliffs and a river below'. Other nearby mountains which have carried their Ainu names until today include Chisenupuri and Iwaonupuri.

SKI RESORT HISTORY

1911	Theodore von Lerch ascends Mount Yotei
1949	Mount Yotei is designated a National Park
1956	Rope tow installed at Asahigaoka ski area
1961	First ski lift in Grand Hirafu ski area
1962	40th All Japan Ski Championships (Alpine)
1963	Niseko mountain range is designated a Quasi-National Park
1966	Taiheiyō Club Niseko Moiwa International ski area opens
1970	Kutchan hosts the 25th National Ski Competition
1972	Niseko Annupuri ski area opens
1982	Niseko Higashiyama ski area (currently Niseko Village) opens
1993	Free Passport lift pass system valid at 4 ski resorts introduced
2002	Niseko starts to receive a large number of Australian tourists
2011	100 years of skiing in Hokkaido and 50 years of ski operation in Hirafu.

Information courtesy of the Niseko Promotion Board

LOCAL LINGO

GREETINGS

Good morning	Ohaiyogozaimasu
Hello	Konichiwa
Good evening	Kon ban wa
Goodnight	Oyasuminasai
Goodbye	Sayonara
See you later	Mata ne
What's your name?	Onamae wa nan desu ka?
My name is ...	Watashi no namae wa (insert name) desu
(nice to meet you)	Dozo yoroshiku
How are you?	Genki desu ka?
I'm fine	Genki desu
How old are you?	Otoshi wa Ikutsu desu ka?

BASIC QUESTIONS

Where is ...?	... wa doko desu ka?
toilet	toire
Are you okay?	Daijoubu desu ka?

RESTAURANT TIPS

How many people?	Nan mei sama desu ka?
two people (3, 4, 5, 6, 7, 8)	'ni' mei desu (san, yon, go, roku, shichi, hachi)
What would you like to drink?	Onomimono wa okimari desu ka?
One beer please	biiru 'hitotsu' kudasai
Food counters	
one	hitotsu
two	futatsu
three	mitsu
four	yotsu
Before you eat say	Itadakimasu
After you eat say	Gochisosamadeshita
Cheers	Kanpai
Delicious	Oiishi

OUT AND ABOUT

Great snow	Sugoi yuki
Excuse me	Sumimasen
I don't understand Japanese	Nihongo ga wakarimasen
Do you speak English?	Eigo ga hanasemasu ka?
Cute	Kawaii
Japan's great!	Nihon wa sugoi

FOOD

RESTAURANTS & BARS

C2
p.39

A-Bu-Cha 2

UPPER HIRAFU

Try our popular Japanese dishes or hot-pots. Choice of over 400 drinks! Mouth-watering Home-made sweets. Take away menu is available. Authentic Japanese seating. Families are welcome.

www.abucha.net

A wide variety of meals and drinks – top marks



6pm – 2am
Food (L.O) 11.30pm

☎ 0136 22 5620

D2
p.39

Bang Bang

UPPER HIRAFU

Ramen lunch at Bang 2 starting this season! We take great pride in our fresh seafood and look forward to offering you mouthwatering dishes from our wide-ranging menus.

www.niseko.or.jp/bangbang

We take great pride in our fresh seafood



Lunch 11am – 4pm
Dinner 5.30pm – 11.30 pm
Occasionally closed
☎ 0136 22 4292

E3
p.39

Barunba

MIDDLE VILLAGE

Barunba is a little bar situated on Momiji street. Enjoy your time with local skiers and snowboarders. Have a drink with us, and enjoy our funky, small bar atmosphere here in Niseko!

HAI-CARUMBA! Bar BARUNBA!



Open 7 Days
8pm–3am

☎ 0136 55 5615

E7
p.38

Black Diamond Restaurant

HIGASHIYAMA

Offering a wide variety of food and drink from around the world. Japanese daily specials, Western, Mexican and Italian dishes! Billiards, darts, happy hour and drink specials daily! Free pickup from The Hilton and The Green Leaf for groups of 6 or more.

www.bdlodge.com

Free pick-up from The Hilton and The Green Leaf for 6 or more



4pm–midnight
(LO 11pm food // 11.30pm drink)
☎ 0136 44 1144

C3
p.38

Cocoro Okonomiyaki

KUTCHAN

Real Osaka-style okonomiyaki and yakisoba cooked by you on your teppan (hot plate). Try our takoyaki (octopus) and chicken balls. Japanese sweets also available.

Great Food, Great Value!



11am – 8.30pm (LO)

☎ 0136 22 1528

B3
p.39

Downtown Café

MIDDLE HIRAFU

Downtown Café is open from 7:30am-9:30pm for breakfast, lunch, dinner and takeaways. Locally sourced and organic produce. A great place to relax, be warm and watch the snow.

We have a warm, cosy atmosphere with coffee & cakes



Open 7 days
8am to 9.30pm
Breakfast, lunch and dinner
☎ 0136 23 3354

A4
p.39

Ebisutei

LOWER HIRAFU

Finished skiing? Drop in for great food and a good time! Laugh and drink at this lively izakaya inn. Enjoy our assorted Japanese hotchpotch.

www.ebcbar.com

Have fun with our genki and laughing oden bar staff



Open daily
5pm – midnight

☎ 0136 22 6544

D2
p.39

GLOORIOUS Coffee

UPPER HIRAFU

Located inside the Rhythm shop, serving take away premium LAVAZZA coffee. Be sure to drop in and enjoy a delicious brew each morning before you hit the slopes. And for those of you with a sweeter tooth, trying our decadent hot chocolate is a must!

www.facebook.com/GloriousCoffee

**“it’s the best coffee in town!”
Point card - 6th coffee FREE!**



Open daily
8pm–4pm

☎ 0136 23 0164

FOOD RESTAURANTS & BARS

C4 Half Note

p.39 MIDDLE HIRAFU

Enjoy live weekend jazz nights as well as Dancing and other live music on weekdays. With, jazz, billiards and table tennis, there's always something going on at Half Note. Check out Half Note's regular jazz events at www.nisekohalfnote.com.

www.nisekohalfnote.com

Hirafu's only jazz bar!



6pm-midnight
Open daily

☎ 0136 23 2727

B3 GYU+ (A.K.A The Fridge)

p.39 LOWER HIRAFU

Gyu + (aka Fridge Door) has been open for over 10 years serving single malt whiskeys, hot cocktails and a long menu of original drinks.

www.gyubar.com

Hand Selected Vinyl Records,
Cocktails & Rare Japanese Whiskey.



Open 7 Days
6pm-1am
(L.O 12.30am)

☎ 0136 23 1432

E2 JAM Café Bar

p.39 UPPER HIRAFU

Try our Jam special burger, and mega waffles with coffee for lunch. We serve various Izakaya style dishes at a reasonable price. More than 80 kinds of drinks are available.

www.jamcafebar.com

Take away is available. Enjoy our
mouth watering home-made sweets!



Lunch 11am - 3pm
(No lunch on Sunday)
Dinner 6pm - midnight
☎ 0136 23 0700

B3 J-Sekka Café and Delicatessen

p.39 MIDDLE HIRAFU

For a hearty breakfast to get you ready for the slopes, great coffee and winter warmers to power you through the day or a lazy afternoon spent discovering the delicious Hokkaido produce used in our house-made delicacies.

www.j-sekka.com

A taste of Hokkaido



open from 7am daily

☎ 0136 21 3088

C3 Kabuki 1 and 2

p.39 MIDDLE HIRAFU

A choice of make-it-yourself or a full service Teppan Yaki restaurant. At Kabuki 1 you can make-it-yourself Okonomiyaki and Teppanyaki. Kabuki 2 (next door) is a full-service Teppan Yaki Restaurant. Early bird 20% for all meals - in by 6pm out by 7pm

www.nisekokabuki.com

Okonomiyaki and Teppanyaki
Restaurants



Open 7 days
5-11pm
☎ 0136 21 2233 (Kabuki 1)
☎ 0136 21 2121 (Kabuki 2)

E2 Kamimura

p.39 UPPER HIRAFU

Trained by one of the world's top chefs, Tetsuya Wakuda, chef Kamimura uses the abundance of Hokkaido produce to create a memorable degustation dining experience.

www.kamimura-niseko.com

Blessed by land, sea and a
creative chef



Dinner 6pm - 11pm
Occasionally closed

☎ 0136 21 2288

E8 M's Café (Saison Club)

p.38 HIGASHIYAMA

Try our huge traditional Japanese nabe hotpots with meat, seafood and vegetables. We have shabu shabu and sukiyaki.

www.saison-club.com

Warm your body with our big
hearty hot-pots



Day 10am-3pm
Evening 5-9pm
LO (8pm)
☎ 0136 44 3380

B4 Manpukutei

p.39 LOWER VILLAGE

2nd season for Korean restaurant, Manpukutei with new menu. Come in after a day of pow and have a great time at Manpukutei in Niseko!!

Pick up service is available!!



6pm-11pm

☎ 0136 55 8588

B3
p.39

Maki Lounge

MIDDLE HIRAFU

With an open fire and sweeping views of the Hirafu ski hill, unwind on our leather lounges. Apres drinks include an array of fine Japanese whiskey, sake, sho-chu and plum wine as well as classic and house-blend cocktails, spirits and glass wine.

www.j-sekka.com

Japanese whiskey, sake and shochu by the fire



Coffee, snacks and games from 10am // bar 2pm-late 7 days
☎ 0136 21 6133

C3
p.39

Niseko So-an Yakiniku Restaurant

MIDDLE HIRAFU

Tasty meat & cold beer! Ideal for groups. Enquire about large group reservations, FREE pick-up service is available.

¥1700 all-you-can-eat BBQ for 60 minutes.

www.nisekosoan.net

¥1700 all-you-can-eat barbecue for 60 minutes



Open daily
5pm - 11pm (LO 10.30am)

☎ 090 2059 6701

C3
p.39

Niseko Pizza

MIDDLE HIRAFU

Visit us at our NEW LOCATION, in the J-Sekka building beside the traffic lights. Enjoy home-made pizza, pasta and succulent beef, pork and other meats from our new grill!

www.nisekopizza.jp

Dine in, Take-away and delivery



Open 5-11pm weekdays
11am to 11pm weekends, holidays, Chinese New year
☎ 0136 55 5553

D2
p.39

Paddy McGinty's Irish Pub & Restaurant

UPPER HIRAFU

Enjoy your perfect powder holiday at our popular pub and restaurant with its welcoming fun atmosphere, imported and local beers, wines, spirits and great value meals.

www.paddymcshintysirishpub.com

Value Drinks, Hearty Meals, Live Sports and Music



Open daily
1pm till Late

☎ 0136 55 8020

B1
p.39

Restaurant LUPICIA Niseko

KABAYAMA

LUPICIA offers fine dining experience in Niseko. A modern fusion of European and Japanese cuisine. Enjoy our sommelier recommended wine: French Chateaus and Domains, Australian favorites, and LUPICIA's reserved wine "LA MEIGE VIERGE".
Open daily (Winter season)

www.lupicia.com

Euro-Japanese cuisine to accent the Hokkaido ingredients



Lunch 11:30am-2pm
Tea Time 2-4pm
Dinner 5pm - 10pm
☎ 0136 21 7880

C3
p.39

Steak Rosso Rosso

MIDDLE HIRAFU

Casual steak house with a contemporary flavour. Juicy, tender wagyu and Kobe beef and a variety of imported wines. Enjoy yourself to satiation with our stylish cuisine and refined hospitality.

www.rossorosso.net

A must for steak lovers!



Dinner 6pm-11pm
Occasionally closed

☎ 0136 21 7100

D3
p.39

Splash Bar Niseko

MIDDLE VILLAGE

It's party night!!

Pool table, darts and yummy drinks. Locals' favorite bar is now equipped with a big screen TV!!

www.splashbarniseko.com

Upcoming exciting events. Ask our friendly staff for details.



Winter Only - Open Daily
9pm-2.30am(L.O)

☎ 080 6096 0698

na

Sumibi Yakiniku Kurobeko

KUTCHAN

Located on Route 5, catch the Kutchan Night-Go Bus to Keizai Center bus stop. It's a 2-min walk from there.
Try the best Authentic Yakiniku!

50 seats are available. Groups are welcome.



Closed Tuesday
5pm - 11.30pm (L.O)

☎ 0136 22 2020

FOOD RESTAURANTS & BARS

F3 Taj Mahal

p.39 IZUMIKYO 1

Enjoy the best of Indian traditional cuisine & courtesy service. Experience Indian meals with Indian beers & wines at our prestigious restaurant. vegetarians meals are also available. 10% discount on takeout orders. Free local delivery.

www.tajmahalgroup.com

Dine in, take-away & delivery



Open all year, 7 days
11.30am to 10.30pm
☎ 0136 22 4566

C3 The Barn

p.39 MIDDLE HIRAFU

Come and enjoy our alpine food and wine in Hokkaido's warmest and authentic bistro atmosphere. Drop in on the way back from the slopes for a snack and hot wine in our friendly bar on the upper floor, or stay the evening for dinner in the main restaurant.

www.nisekobarn.com

Hokkaido's one and only alpine bistro



Open 7 days 6pm to late
(LO 9.30pm food // drinks 11.30pm)
☎ 0136 23 0888

D2 Tozanken Asahikawa Ramen

p.39 UPPER HIRAFU

Asahikawa ramen is made from 100% Hokkaido wheat noodles served in a smooth and rich soup. There is a wide selection of dishes to choose from including Donburi rice bowls. From Asahikawa's original ramen restaurant.



Open 7 days
11.00am-11.30pm
(LO 11pm)
☎ 0136 23 4549

Try Asahikawa Ramen with Gyoza

C2 VBG – Vale Bar and Grill

p.39 UPPER HIRAFU

This year the VBG has taken a step forward with a menu based around a modern French Steakhouse with a wine list to match. The slow roast beef steak is a must try and the 1945 fortified Grenache is an experience of a lifetime. Open from breakfast through to late night.

www.nisekoalpineaccommodation.com

The VBG is a casual flavoured field dining highlight.



Open 7 days
7am to late
All-day dining
☎ 0136 21 5833

B2 Wabi Sabi Café

p.39 MIDDLE HIRAFU

Great Value, Healthy Japanese Café. Wabi Sabi Café. We serve Donburi, a classic Rice Bowl cuisine & Cakes, Coffee and Chai. Free WiFi, Daily Specials. 10% Discount will apply between 12pm & payment & departure before 7pm.



Open 7 days
12 Midday - 10pm
☎ 0136 21 5115

Specialty Donburi Rice Bowl Lunch & Dinner Café

www.nisekowabisabi.com

B2 Wabi Sabi Express

p.39 MIDDLE HIRAFU

Delivery and Take Out. Japanese Rice bowl (Donburi) 1pm - 10pm Daily specials, Salads, Drinks all Delivered. 10% off for Takeout before 7pm. Online Orders given priority.

www.nisekowabisabi.com

Original Japanese Delivery & Take Out Service



Take Out and Delivery Good value Japanese.
Eat In & Take Out
12 Midday - 10pm
Delivery: 1pm - 10pm
☎ 0136 21 5115

E2 Wild Bill's

p.39 MIDDLE HIRAFU

We offer a great selection of Japanese izakaya style food in the warm log house setting. Late night a sure spot for a good party!



Open 7 days
5pm-Late
☎ 0136 55 5774

Come and enjoy our great food and music.

www.powderlife.com

D4 Yummy's

p.39 MIDDLE HIRAFU

Ceasar Salad, Avocado Salsa Salad, Chicken Wings, Bacon Pepper Steak, Baked Cream Potato, Cheese Fondue, wines and of course various styles of pizza. And more more!

www.yummypizza.com

Yummy homemade crust pizza and western foods restaurant



5-11pm daily
Delivery available in the Hirafu area
☎ 0136 21 2239

TOURS & ACTIVITIES

F8 Black Diamond Tours

p.38 NISEKO VILLAGE - HIGASHIYAMA

Check out Niseko's incredible backcountry or visit Rusutsu, Sapporo Kokusai or Teine Highland. We also have a range of backcountry tours to suit your lung capacity.



8am-8pm daily
In Niseko Village
across from Milk Kobo
☎ 090 2054 8687

www.blackdiamondtours.com

Niseko's backcountry powder specialists

D2 Japanese Cultural Tours

p.39 HIRAFU

Tours will take you to various cultural attractions in Kutchan: Tea ceremony, laido sword demo, Taiko drums, sake-brewery tour and Japanese dinner. ¥5000/¥3000. Departs from Niseko Hirafu Safety & Information Center (Seicomart) ends in Kutchan.

Tour Dates: 28 Dec, 8 Jan, 20 Jan, 3 Feb, 17 Feb

www.kutchan-town-st.com/mailjapan.htm



3-7.30pm
Bookings essential

☎ 0136 23 0222

Reservation is required. Experience Japanese Culture !

E1 Niseko Foot

p.39 UPPER HIRAFU

Visit this popular relaxation salon and sample some of our many treatments at Aplen Hotel 1F and B1F. All different styles of massage are available for body and feet. 30-minutes, 60-minutes and 90-minutes courses are available. Groups are welcomed. Osteopathy and sports injuries are offered.

www.grand-hirafu.jp/nisekofoot



Open daily
11am-10pm
Free pickup available
☎ 0136 22 1224

Closest healing relaxation therapy spot to Centre 4 lift

F1 NISS

p.39 HIRAFU AND HANAZONO 308

Let our instructors inspire you on your Hanazono/Hirafu snow holiday. With two great locations and a suite of programs we'll help you learn new skills, gain confidence and above all enjoy your time in the powder of Niseko. Hanazono 308, Hirafu Kogen, Fusion Hirafu, The Vale Snowsports.

www.hanazononiseko.com



8am-9pm

☎ 0136 21 6688

Kids are our speciality Hanazono and Hirafu

E2 Deep Powder Tours Ski Holidays

p.39 UPPER HIRAFU

A licensed I.A.T.A international travel agent. Check out our website for a broad overview of the many ski resorts in Japan that we offer.



www.deeppowdertours.com

B3 Niseko Photography Tours

p.39 MIDDLE HIRAFU

Professional photography and video services.

From the deepest powder pics to group tours and family shots - Niseko Photography are the local professionals. Book a private tour and we will capture your priceless holiday memories while you and your friends or family cruise the mountain.

www.nisekophotography.com



Available Everyday
Call to book

☎ 0136 22 5764

Niseko's professional photographers

B2 Niseko Physio & Massage

p.39 MIDDLE HIRAFU

Australian trained physiotherapists specialising in knees, and all snow sports injuries. Serving Niseko since 2006 and in Tokyo since 2002. We also operate Niseko Massage, oil sports and relaxation massages from ¥6,000 per hour.

www.nisekophysio.com

www.nisekomassage.com



7 days
8am-8pm

☎ 0136 22 0399

Niseko's injury centre also providing sports & relaxation massage

E3 NOASC

p.39 MIDDLE HIRAFU

NOASC is Niseko's premier winter adventure company.

We offer ski school (skiing/snowboarding/telemarking) lessons for kids through to advanced skiers, powder lessons, mountain guiding, snowshoe tours, CAT skiing, Niseko Explorer Private tours, kids adventure school, and backcountry tours.

www.noasc.com



8am-7pm
All year round

☎ 0136 23 1688

Just Do It adventure tours - an experience you won't forget

RETAIL & SHOPPING

F5 Hana Jizoh

p.39 IZUMIKYO 2

Amazing sweet and savoury breads and pastries from a friendly local family baker. You must try this! Get the free Hirafu Village shuttle to bus stop 27, near Unitas Log Village. Eat in or takeaway.



8am – 4.30pm
Closed Wed & Thurs.

☎ 0136 23 0331

Creative and delicious breads from a local baker

E2 Mariposa

p.39 UPPER HIRAFU

Sweet Muffin, Savory Muffin and Scones. Delicious Bread available on Thursdays. Cream puff also available on weekends. Enjoy our delicious, freshly baked muffins & scones, homemade daily from a selection of over 50 of our favorite recipes.



Daily
8am–9.30pm
☎ 0136 22 5677

www.mariposa.asia

Delicious muffins, scones and soup

D1 Fusion

p.39 UPPER HIRAFU/HANAZONO

Try on the latest gear from popular brands like Burton, Volcom, Orage and The North Face. Stop into our main Hirafu shop for a complete selection or the Vale and Hanazono locations for any on-snow accessories.



Hirafu 8am–9pm
The Vale 8am–9pm
Hanazono 8.30am–5pm
☎ 0136 21 6633

www.hanazononiseko.com

Prepare for the pow with the latest gear at Fusion

D3 Mountainshop Niseko 343

p.39 MIDDLE HIRAFU

Best item selections in Niseko
Satisfaction is guaranteed for any skiers to have a great time in Niseko. FAT SKI rental for powder snow has variety selection. Rental delivery and pick up service is available.



Daily
9am–9pm in winter
☎ 0136 23 0343

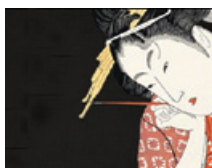
www.niseko343.com

NISEKO+343 =200%FUN

E3 Niseko Cultural School & Momiji Gallery

p.39 MIDDLE HIRAFU

Small classes of tea ceremony, calligraphy, Japanese cooking: sushi /sukiyaki /hotpot, bamboo painting & cultural tours. ¥4,000 to ¥10,000. Perfect on your own or with friends. No kids under 12. Bookings at Momiji Art Gallery & Japanese gift shop on ground floor.



Open 7 days
1pm–7pm

www.nisekoculturalschool.com

Learn & experience Japanese Culture in Hirafu

☎ 0136 55 8585

B3 Niseko Photography Gallery

p.39 MIDDLE HIRAFU

Stunning limited edition prints and fine art canvas works. Niseko Photographie's gallery, located in Niseko Cellars, is a showcase of beautiful photography from Niseko's stunning 4 seasons. Prints available in quality frames, or unframed for easy travel.



Open Daily
Midday – 10.00pm

www.nisekophotography.com

Photo gallery – fine-art prints and souvenirs

☎ 0136 22 5764

D2 Yukara

p.39 UPPER HIRAFU

Stocking a wide variety of souvenirs, original t-shirts, Hokkaido sweets and more. Remember your holiday and take home a souvenir with you and share with your family and friends.



7 days
9am–10pm

Reopened in 2010 on 2nd floor of Tozanken Asahikawa Ramen

0136 23 4546

D2 Sakura

p.39 UPPER HIRAFU

Tucked in behind Paddy McGinty's, Sakura offers a wide selection of gifts including kimonos, geisha hairpins, pottery, paintings, traditional wooden furniture and more.



Daily
1–7pm in winter
☎ 0136 21 7007

www.sakura-niseko.com

Your one-stop Japanese souvenir shop

RENTAL & SERVICES

NA BonTak

Specialist for ski and snowboard tune up & repair.
Pick up and delivery service available to accommodations in Niseko



www.bontak.jp

I ♥ NISEKO

Free pick up 3pm~6pm
Free deliver till 8:30am
☎ 0136-44-1501
☎ 090-7584-5535

D1 Demo Equipment Hire

UPPER HIRAFU/HANAZONO

Situated in three areas, Hirafu main village, The Vale, and Hanazono, Demo offers the latest equipment with the flexibility of renting, exchanging, and returning at any location.



www.hanazononiseko.com

Multiple locations, wide equipment range, endless possibilities

Hirafu 8am-9pm
The Vale 8am-9pm
Hanazono 8.30am-5pm
☎ 0136 21 6677

D2 Glen Claydon Photography

UPPER HIRAFU

Complete photographic services including architectural, landscape, stock, prints and panoramic photography for online virtual tours.



www.glenclaydon.com

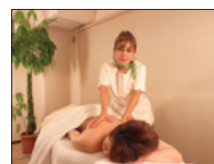
Complete photographic services

☎ 080 6098 7244

C3 Hermosa Angel Massage

MIDDLE HIRAFU

Offering both traditional shiatsu and relaxing oil massages either in your suite or at our salon, 1F J-Sekka building. Inka Rebeza's skilled practitioners provide truly exceptional service. Chida-sensei's team have a course to suit you, with flexible bookings and a variety of packages available.



www.inkarebaza.com

Relax and rejuvenate in the heart of hirafu

Open 7 days
Appointments available from 11am-midnight
☎ 0136 23 2004

na Hokkaido Services

NISEKO

- Construction & Renovations
- Project Management
- Property Maintenance
- Independent Building Reports
- Discount Glass - dbl glazing from ¥10000/sqm

www.hokkaidoservices.com



call John 8am-8pm

Innovative building solutions for Niseko

☎ 090 9756 7616

F7 Niseko Auto Rentals and Sales

HIGASHIYAMA

Complement your holiday or home with a 4WD vehicle. Local licensed dealer offering affordable rentals and sales IN ENGLISH. Short and long-term rentals available. English navigation available.



www.nisekoauto.com

4WD vans from ¥46,200/week or ¥135,000/month

9am-9pm
24hr Emergency English
Roadside Assistance
☎ 0136 44 1144

E3 Niseko Realty Sales

UPPER HIRAFU

Dealing in real-estate sales, property management, and holiday lettings. Our staff are native to the area and know the property market. For trustworthy advice, sales, accommodation contact us at 0136-23-2221, info@nisekorealty.com, or drop by our Hirafu office across from the SPLASH bar.

www.nisekorealty.com



8am-7pm
All year round

Secure your future in Japan's premier powder ski area

☎ 0136 23 2221

D2 Travelplan

UPPER HIRAFU

Australia's #1 snow holiday specialist with 41 years' experience, offering a wide selection of pensions, hotels and quality apartments in Niseko and other resorts. CMH Heli Skiing in Canada - information night every Wednesday 4th Jan-8th Feb. For more information contact Travelplan.

www.travelplanski.com



The world's best ski holidays

7 days
8am-12pm
3pm-7pm
☎ 0136 21 5354



FOR YOUR SAFETY

Regardless of how you enjoy your snow sports, always show courtesy to others and be aware that THERE ARE INHERENT RISKS in all snow recreation activities. These risks include rapid conditions, collisions with other people as well as natural and artificial hazards such as rocks, trees, other spots, lift towers and snowmaking equipment. Common sense and personal awareness can reduce such risks. Observe the ALPINE RESPONSIBILITY CODE and share with others the responsibility for a great experience.

ALPINE RESPONSIBILITY CODE

1. Know your ability and always stay in control.
2. Take lessons from qualified professional instructors to learn and progress.
3. As you proceed downhill or overtake another person, you must avoid people below and beside you.
4. Do not stop where you could obstruct a trail, a run or are not visible from above.
5. When entering a trail, a run or starting downhill, look uphill and give way to others.
6. Always use chair restraining devices. Enter ski lifts and always use proper boarding technique.
7. Observe and heed all signs and warnings. Keep off closed trails or runs and keep out of closed areas.
8. Before using any lift you must have the knowledge and ability of how to load and unload safely.
9. Do not ski, snowboard, ride a lift or undertake any other alpine activity if you are impaired by drugs and alcohol.
10. In the event of an accident, alert the Ski Patrol, remain at the scene and identify yourself to them.

KNOW THE CODE: IT'S YOUR RESPONSIBILITY

8. BACK COUNTRY SKIING/RIDING IS STRICTLY PROHIBITED WHEN GATES ARE CLOSED

8. RESPECT EACH OTHER

The Niseko Rules have been created with everyone's safety in mind. In order for everyone to remain safe, everyone must respect and follow these rules.

Niseko Rules are official regulations, established by the Niseko Allmountain Avalanche Prevention Committee, the Niseko Mountain Resort Safety Committee, the Niseko Free Passport Committee and the Hokkaido Shirebashi Alpine Accident Prevention Committee.

2. CROSSING ROPES IS STRICTLY PROHIBITED

During extremely hazardous conditions, access gates will be closed and out of bounds riding will be strictly prohibited.

3. AVALANCHE CONDITION INFORMATION

The "Niseko Avalanche Information" is the official information posted by "Niseko Avalanche Institute". This information can be found at lift stations, access gates and on the internet.

4. BACK COUNTRY SKIING/RIDING IS STRICTLY PROHIBITED WHEN GATES ARE CLOSED

You are responsible for the cost of your rescue from back country areas.

7. SKI AND MOONYAH PATROL INSTRUCTIONS MUST BE OBEYED

1. CERTAIN CLOSED AREAS WITHIN NISEKO ARE STRICTLY OFF LIMIT AND ARE NOT TO BE ENTERED AT ANY TIME

Yuno Sawa (gully between Annupuri and Niseko Village area), and Haru no Taki (cliff area west of Hirafu) are "STRICTLY OFF LIMIT AREAS" as stated by the Niseko Rules. These riding these areas dangerous and if you choose to do so, YOU AT YOUR OWN RISK.

NISEKO RULES

The Niseko Rules are Niseko's official regulations created for the safety and freedom of everyone using the ski resort and riding beyond the ski area boundary.

Avalanche Control Operation Area

Various methods of Avalanche Control are in use in this area in the interest of increasing avalanche awareness and safety.

Only skiers and riders participating in the program are permitted to use this area.

Contact: Niseko Village 0136-44-2211

Strictly Off limits

Make sense. Untargetable.

Strictly Off limits

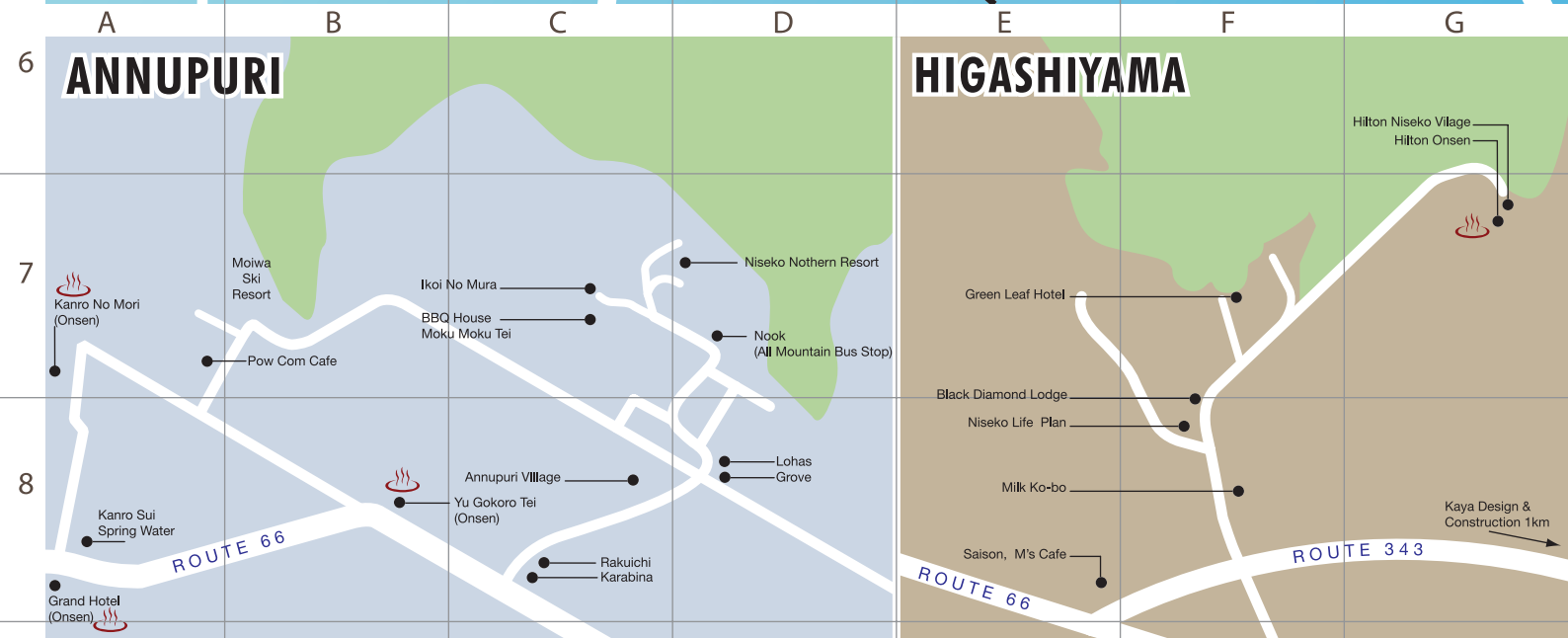
Make sense. Untargetable.

FOR YOUR SAFETY

Regardless of how you enjoy your snow sports, always show courtesy to others and be aware that THERE ARE INHERENT RISKS in all snow recreation activities. These risks include rapid conditions, collisions with other people as well as natural and artificial hazards such as rocks, trees, other spots, lift towers and snowmaking equipment. Common sense and personal awareness can reduce such risks. Observe the ALPINE RESPONSIBILITY CODE and share with others the responsibility for a great experience.

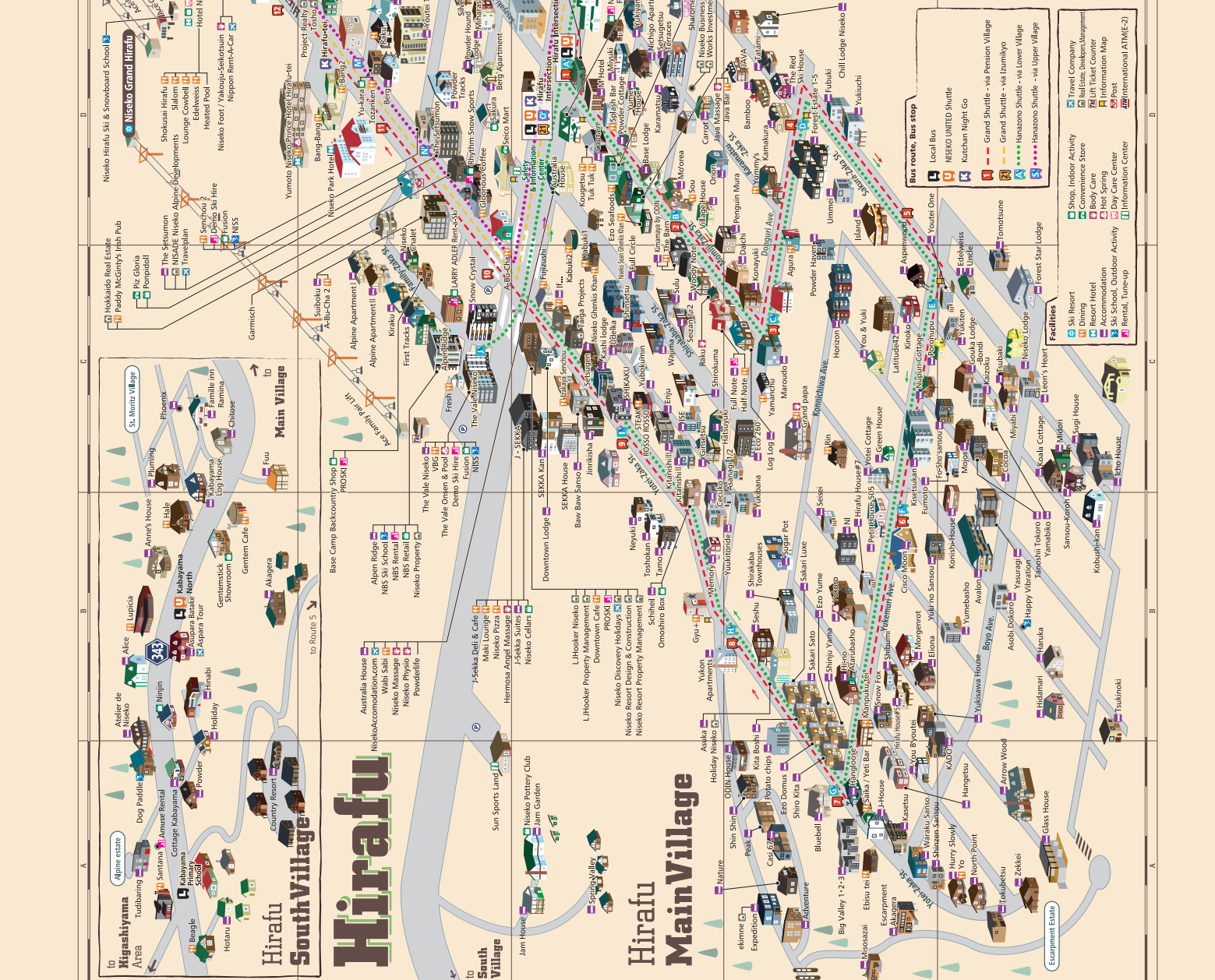
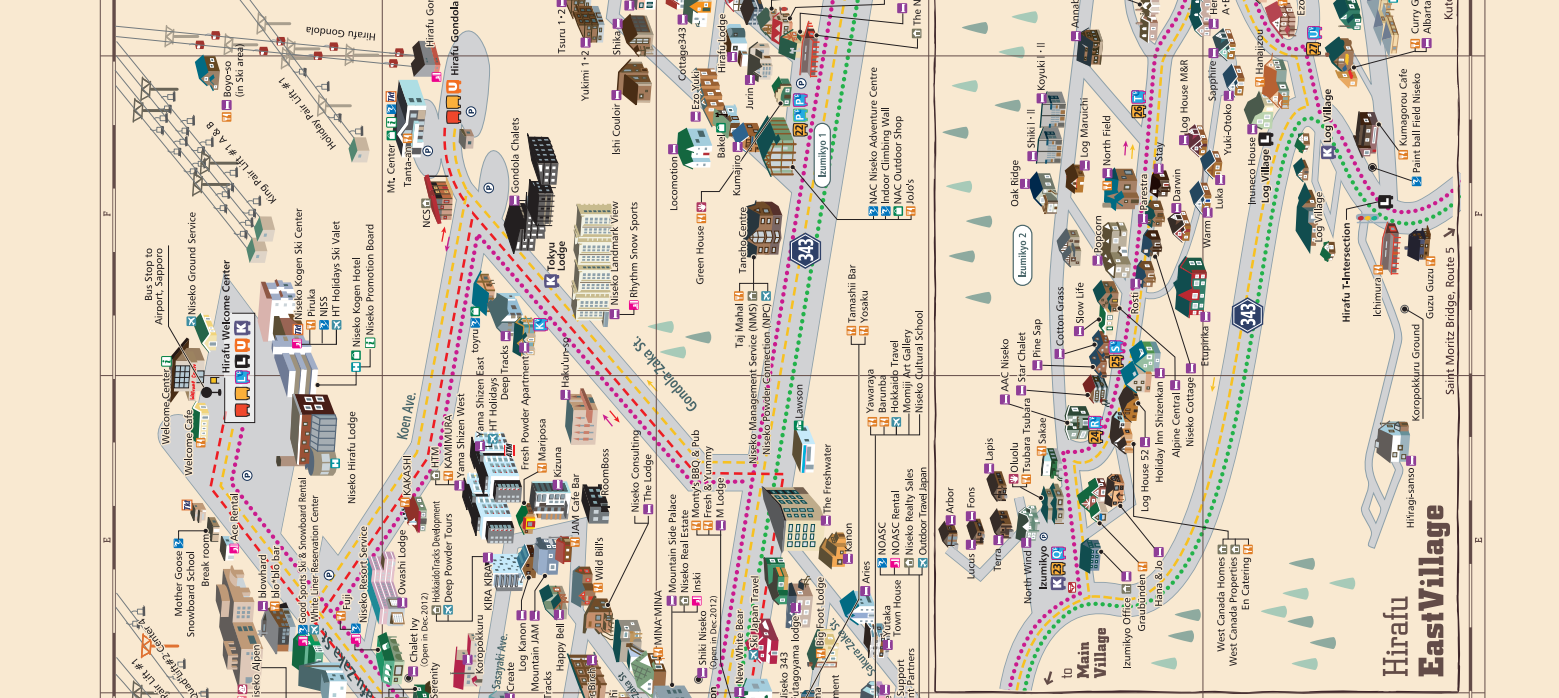
ALPINE RESPONSIBILITY CODE

1. Know your ability and always stay in control.
2. Take lessons from qualified professional instructors to learn and progress.
3. As you proceed downhill or overtake another person, you must avoid people below and beside you.
4. Do not stop where you could obstruct a trail, a run or are not visible from above.
5. When entering a trail, a run or starting downhill, look uphill and give way to others.
6. Always use chair restraining devices. Enter ski lifts and always use proper boarding technique.
7. Observe and heed all signs and warnings. Keep off closed trails or runs and keep out of closed areas.
8. Before using any lift you must have the knowledge and ability of how to load and unload safely.
9. Do not ski, snowboard, ride a lift or undertake any other alpine activity if you are impaired by drugs and alcohol.
10. In the event of an accident, alert the Ski Patrol, remain at the scene and identify yourself to them.



- A7 Kanro No Mori
- B7 Moiwa Ski Resort
- B7 Pow Com Cafe
- C7 Ikoi No Mura
- C7 BBQ House Moku Moku Tei
- D7 Niseko Nothern Resort
- D7 Nook
- A8 Grand Hotel (Onsen)
- C8 Annupuri Village
- C8 Yu Gokoro Tei (Onsen)
- C8 Rakuichi
- C8 Karabina
- D8 Lohas
- D8 Grove

- G6 Hilton Niseko Village
- G6 Hilton Onsen
- E7 Green Leaf Hotel
- E7 Black Diamond Lodge
- E7 Niseko Life Plan
- E7 Niseko Life Plan
- E8 Milk Ko-bo
- E8 Saison
- E8 M's Cafe
- G8 Kaya Design & Construction



Hirafu South Village

Legend:

- Local Bus
- INISEKO UNITED Shuttle
- Kutchan Night Go
- Grand Shuttle - via Pension Village
- Grand Shuttle - via Izumikyo
- Hazono Shuttle - via Lower Village
- Hazono Shuttle - via Upper Village

Facilities:

- Ski Resort
- Dining
- Resort Hotel
- Ski School
- Rental, Tune-up
- Ski Rental
- Helpline, Develop, Management
- Lift Ticket Center
- Information Map
- Info Center
- International ATM(E-2)

Hirafu Main Village

Legend:

- Shop, Indoor Activity
- Convenience Store
- Beauty Care
- Spa
- Information Center
- Travel Company
- Helpline, Develop, Management
- Lift Ticket Center
- Information Map
- Info Center
- International ATM(E-2)

* TRAVEL FEATURE // canyoning the nishizawa gorge



PHOTOGRAPHY AND WORDS BY // kanami anderson

As I sit on the edge of a 20m waterfall with a crowd of my friends cheering me on from below, I think to myself, “What on earth am I’m doing?”.

I am about to canyon the fifth of the Nanatsugama-godan-no-taki, a beautiful five-tiered waterfall on the Yamanashi River in the Nishizawa Gorge. If you’re not familiar with the term canyoning – it is a relatively new sport that gained its popularity in the 1990s. It involves abseiling, jumping, sliding, and swimming down a river through a canyon.

The majority of visitors who venture to the Nishizawa Canyon are hikers enjoying the breath-taking scenery of the valley. Most of them would probably never think of viewing the valley while swimming down the river, and would be surprised to know that the Yamanashi river is one of the best in Japan for canyoning and also whitewater kayaking.

The Nishizawa Valley is in Yamanashi prefecture, which is located in the middle of Honshu.

This prefecture is a powerhouse for tall mountains, pristine forests, national parks, lakes and hot springs. Most people who visit this area want to climb Japan’s highest and most sacred mountain, Mt Fuji. The Nishizawa Valley is near Mt Fuji, and is an off-the-beaten-path gem unknown and often overlooked. For this very reason I immediately accepted when my friends offered me a spot on their canyoning/kayaking adventure to this unique rural area of Japan.

“**If you’re not familiar with the term canyoning – it is a relatively new sport that gained its popularity in the 1990s**”

The trailhead to the Valley begins at the back of the Nishizawa Keikoku Gorge car park, which is about two and a half hours from Tokyo by car. Our crew of kayakers and canyoneers gathers here to put on wetsuits, organise our gear for the day, and begin the two hour hike to the first waterfall. The trail is well maintained and a fairly easy hike, but there are

some steep uphill sections that can be challenging, especially if you are lugging up a kayak and a paddle. The five-tiered Nanatsugama-godan-no-taki is the starting point for the canyoning/kayaking run.

Since this is my first time canyoning I think my friends are joking when they tell me that this is the first waterfall we are going down. “No seriously, where are we really going to start canyoning?” I ask in disbelief. Luckily I have four

smaller waterfalls to warm up on before taking on the 20m one. They range from two to 10m. “You’ll be fine,” says my friend Hide, “they look bigger than they are!”

I finally work up the courage to push off the 20m waterfall, the one I’ve been sitting on top of for the last 10 minutes in sheer fright, and as I do I can hear my friends chanting

my name from down below. The first 10m of the waterfall are through a mini chute, and it is completely dark. The last 10m are a straight free-fall, and I am disoriented by the burst of bright sunlight when coming out of the chute. I lose my co-ordination and land bum-first into the pool. Luckily I am wearing 7mm of the thickest neoprene wetsuit I could find, so I don’t feel a thing.

I’m underwater for a few seconds before my lifejacket shoots me up to the surface. I pop out of the water, out of breath, terrified, and screaming, and before I can process what just happened I hear myself yell, “Let’s do that again!”

If you don’t have a car but would like to visit the Nishizawa Valley you can get there from Tokyo Station. It takes approximately 90 minutes on the JR Kaiji Express to get to the Shioyama Station and then hop on the Yamanashi Sangaku Kotsu Bus and it takes about 60 minutes from there to the entrance of Nishizawa Keikoku Gorge.



INDIAN RESTAURANT

タージマハール TAJ MAHAL

Since 1982



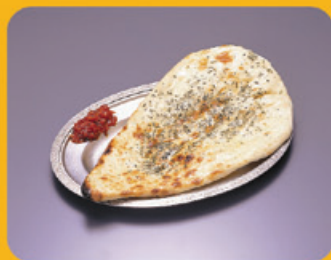
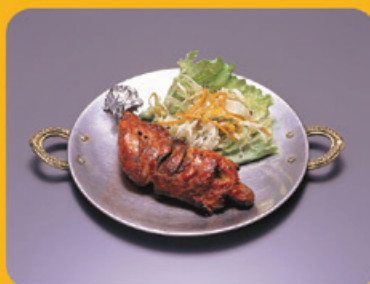
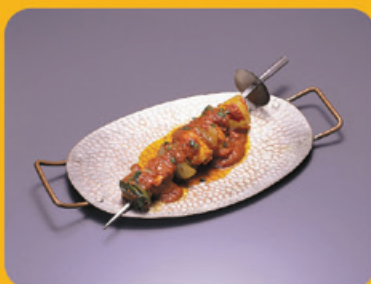
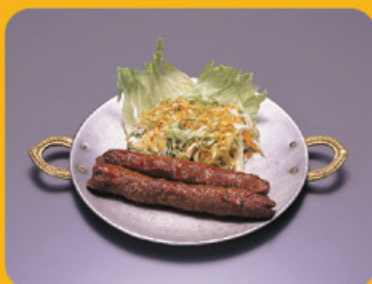
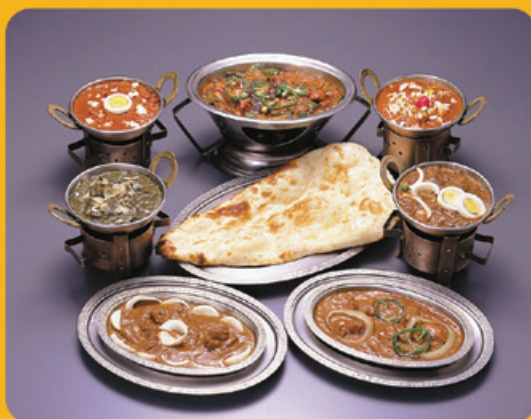
NISEKO BRANCH

**VEG &
NON-VEG**
available

All meats are
HALAL

**10%
OFF**
for take-away

**FREE
WI-FI**



Namaste! We welcome our guests and their families to enjoy an all you can eat lunch buffet everyday until the end of March 2012.



Address:
1F Tancho Centre
179-8 Yamada, Kutchan-Cho
Abuta-Gun, Hokkaido 044-0081

Tel: 0136 22 4566
Web: www.tajmahalgroup.com
Twitter: @tajmahalgroup



* DISCOVER HOKKAIDO



NIKKA WHISKY

NIKKA Whisky has not only won several international awards but is also one of the few remaining distilleries in the world that use traditional methods to make high-quality whisky. It was the first distillery to open in Japan and is therefore an important landmark in the history of Japanese whisky making.

Founder Masataka Taketsu was the first Japanese to study the art of whisky making at the University of Glasgow back in 1918. Although whisky originated in Ireland, Scotland was and is still considered the cradle of whisky by many people.

Masataka's family owned a sake brewery that dates back to 1733, and he was originally set up to take over his family's business. But his heart was set on the art of whisky making and he decided to dedicate his whole life to his passion

of creating the best quality whisky for his home nation Japan.

In 1934 he established the first Nikka Whisky distillery in the town of Yoichi, Hokkaido, because he considered this location to be the most ideal site in Japan due its similarities in climate with his University town of Glasgow.

Nikka Whisky can be explored on a half-day trip from Hirafu Village – it's only a 45-minute ride on the train from the Kutchan JR station in the direction of Otaru. Get off at the JR Yoichi station and it's a 3-minute walk. They offer daily tours at the Yoichi distillery that includes a small tasting of its many award-winning single malts.

OTARU

WELL worth a visit for its historic architecture, fresh seafood and famous handicrafts, the port city of Otaru is an easy day trip from Niseko.

As Otaru has been a fishing town for centuries, the city's most famous landmark is the canal, which used to be the transportation hub for fishing tugboats. The canal is adorned with Victorian-style street lamps on its walkway, and lined with warehouses that have been turned into souvenir shops and restaurants.

Otaru is also famous for its sushi and sashimi, and supplies high-quality seafood across Japan, so make sure to try the seafood BBQ, sushi rolls, or a plate of hairy crab legs.

A popular attraction on the west side of the city is Nishin Goten (herring mansion). This large

wooden building, built in 1897, was once the house of Hunkumatsu Tanakaa, a tycoon of the herring fishing industry. Visitors can clearly see the difference between the run-down conditions of the first floor sleeping quarters of the workers and the ground floor luxury of Tanaka's rooms.

Another major industry in Otaru was glass. There were – and still are – many glassware factories across the city, as the residents used to make glass buoys and lamps for fishery. In the old days, they also started making glass souvenirs to attract more visitors. There are plenty of shops and small museums around the city, which display the unique and creative glassware designs. **Otaru can be directly reached by train from either Kutchan or Niseko.**



family time. warm memories.



TAIGA

REAL ESTATE & PROJECT MANAGEMENT 大河

www.taigaprojects.com tel / 080 3233 0262

Niseko's Boutique Property Service

Niseko Ranch Land
Unbroken mountain and farmland views
Land : 3.5 hectares near Niseko Town
3,625yen per tsubo



Hirafu Estate Land
Proximity, privacy, forest views
Land : 4,638m² or 1,403 tsubo
Best village price



絆

KIZUNA
JANUARY 2012 COMPLETION

WWW.KIZUNANISEKO.COM

NISEKO
real estate

www.nisekorealestate.com
+81 (0)136 21 77 22
info@nisekorealestate.com



1 – Odin Chair, designed by Jamie McLellan and Gold winner of New Zealand Best Design Awards 2011.

2, 5 – Yasuragi by Odin defines alpine spa-living in Niseko.

3 – The Barn by Odin has achieved recognition as one of Niseko's finest (and funnest) dining venues.

4 – Odin House bears the distinctive pedigree of Odin's design philosophy.

 **ODIN**

- RESIDENCES & APARTMENTS
- HOTEL & RESTAURANT
- RETAIL

ENQUIRY TEL +81 136 23 2603
WWW.ODIN-PROPERTY.COM

